



THE EU SINGLE-USE PLASTICS DIRECTIVE

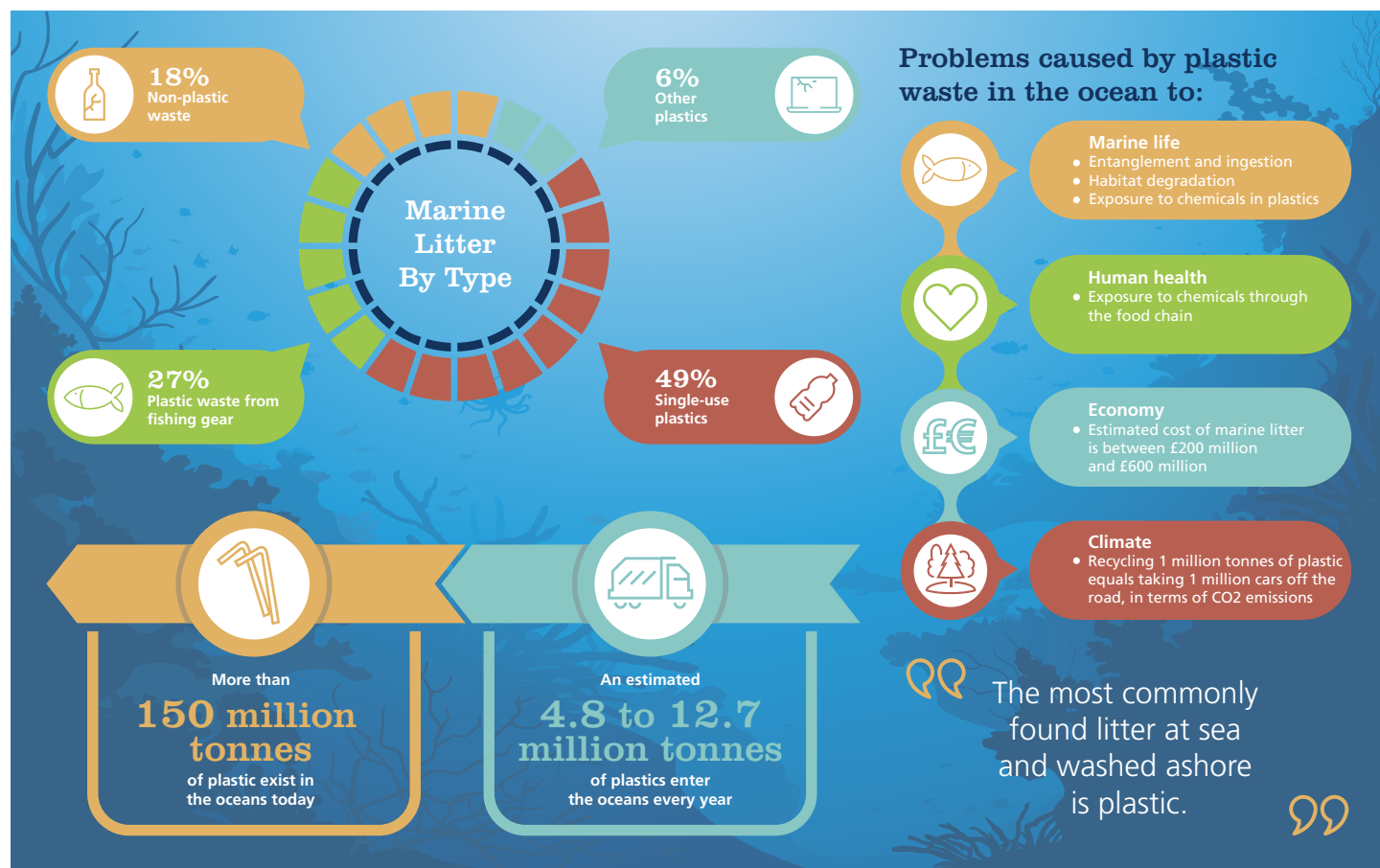
What is it?

New far-reaching EU guidance is aimed at reducing plastic marine pollution.

It is based on the 10 most found single-use plastic items and fishing gear which account for at least 70% of marine litter in Europe.



The European Strategy for Plastics is a step towards establishing a circular economy in which the design and production of plastics and plastic products fully respect re-use, repair and recycling needs and in which more sustainable materials are developed and promoted.



What is banned?

Oxo-Degradable Plastics

Common in cold cups, cutlery, straws, and carrier bags, and often labelled 'degradable' or mis-sold as 'biodegradable'. These are conventional plastics with an additive to make it fragment into small flakes, but are not suitable for recycling or composting.

Expanded Polystyrene

Also known as Styrofoam. Very common material in food and drink containers such as cups, clamshells, plates and bowls.

All plastic cutlery, plates, stirrers and straws

This includes plant-based and compostable plastics, as the directive is based on how materials behave in the marine environment. Compostable packaging breaks down in commercial composting conditions which provide a perfect balance of microbes, moisture and warmth; these are different conditions to the sea.

When does the ban come into force?

While the UK is not required to bring this Directive into UK law, the four nations are taking different approaches, with Northern Ireland required to comply by 2022. England is not implementing the Directive but is adhering to its Waste and Resources Strategy. Wales are likely to opt into many parts of the Directive and are discussing banning nine different single-use plastic items. Scotland aims to meet or exceed the EU Directive, which could result in a ban on most takeaway containers.



Did you know?

Although the European ban came into place in July 2021, the UK banned the sale of all plastic straws, stirrers and plastic stemmed cotton buds in April 2020.

Plastic was designed to last forever, it has no place as a single-use material.

CONTENTS

Making the change

Alliance recognises the impact that single-use plastics have on the global and local environment and is committed to conscious environmental improvement wherever possible. Alliance is striving to ensure that the products we offer to customers have been manufactured using environmentally sound methods and policies.



6



8



14



16



18



26

Environmental Products

Bar Supplies

| | |
|----------|---|
| Straws | 5 |
| Stirrers | 6 |
| Napkins | 6 |

Disposables

| | |
|--------------------|----|
| Cold Cups | 7 |
| Hot Cups | 9 |
| Cutlery | 11 |
| Paper Bags | 11 |
| Food Containers | 12 |
| Sandwich Packaging | 14 |
| Salad Bowls | 14 |

Reusables

| | |
|-------------------|----|
| Reusable Bottles | 15 |
| Reusable Hot Cups | 16 |

Hotel & Leisure

| | |
|--------------------------|----|
| Guest Miniatures | 18 |
| Press & Wash Systems | 21 |
| Bulk Refills | 21 |
| Soap Dispensers | 22 |
| Guest Towels & Bathrobes | 23 |

Housekeeping

24

Trolley System

24

Janitorial

25

Recycling Stations

25

Spray Bottles

28

Mop Heads

28

Cloths

28

Refuse Sacks

29

Wet Floor Sign

29

Urinal Hygiene

29

Mop Buckets

29

Cleaning

30

Electrostatic Cleaning

30

Non-Chemical Cleaning

31

Biological Drain Maintenance

31

Chemicals

32

Paper Hygiene

39

Catering Appliances

40

Refrigeration

40

Water Boilers

40

Cooking Equipment

40

Warewashing

42

Accessories

43

Environmental Guide

End of Life Terminology

44

Recyclable

44

Reusable

44

Biodegradable

45

Compostable

45

Plastic Recycling Symbol Guide

47

Materials Guide

48

PLA

48

CPLA

48

PET & rPET

48

Bagasse

49

Bamboo

49

Palm Leaf

50

Recycled Paper/Card

50

Wood

50

Polypropylene

50

Polycarbonate

50

Recycling Symbols, Explained

51



Did you know?

Most of the plastic waste in the UK doesn't end up in the oceans, it is disposed of in our environment – burned or buried in landfill sites. People are increasingly worried about its impact on nature. 79% of the plastic waste created is still in our environment.



Straws

Paper

Make a stand against the harmful effects of plastic straws with these biodegradable paper straws. They only take 3 months to biodegrade and do not contain any bleach making them the ideal choice of drinking straw.

Available in a variety of colours and styles – contact your Alliance representative to see available options.



Black Stripe
PSPM0112
20cm (6mm Dia.)
1x250



Yellow
PSPM0108
20cm (6mm Dia.)
1x250



Grey
PSPM0106
20cm (6mm Dia.)
1x250



Red
PSPM0107
20cm (6mm Dia.)
1x250



Black
PSPM0104
20cm (6mm Dia.)
1x250



White
PSPM0105
20cm (6mm Dia.)
1x250

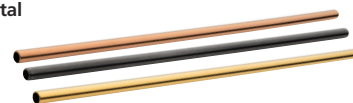


Black
PSPM0132
14cm (6mm Dia.)
1x250



White
PSPM0030
14cm (6mm Dia.)
1x100

Metal



| STOCK CODE | DESCRIPTION | QTY |
|------------|-------------------|-----|
| BMCC0002 | Copper 14cm | 12 |
| BMSB0004 | Matt Black 14cm | 12 |
| BMGC0001 | Gold 14cm | 12 |
| BMSC0002 | Copper 21.5cm | 12 |
| BMSB0002 | Matt Black 21.5cm | 12 |
| BMSG0001 | Gold 21.5cm | 12 |

Individually Wrapped

A hygienic alternative to loose straws. Both the wrap and straw are made from paper.



White
PSPM0141
20cm (6mm Dia.)
1x200

Smoothie

Features a larger bore compared to standard straws, for thicker cold beverages.



White
PSPM1020
20cm (8mm Dia.)
1x200

Why plastic straws sucked

Straws created pollution at every stage of their existence.

8% of world oil production is used to manufacture plastics



Straws don't biodegrade, they photodegrade!

Plastic is ∞

Over time, the sun's UV rays break plastic down into smaller, more harmful pieces that last hundreds of years. Even then it is still plastic.



It is estimated that
**1 million sea birds,
100,000 marine animals**
and countless fish are killed by plastic pollution each year.



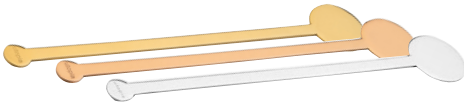
Stirrers

Wood
Be kinder to the environment with our natural birch wood cocktail disc stirrers. 100% compostable, 100% biodegradable, 100% recyclable and FSC certified.



| STOCK CODE | DESCRIPTION | QTY |
|------------|-------------|--------|
| PBSB1012 | 18cm | 250 |
| PBSB0014 | 20cm | 10x100 |

Metal



| STOCK CODE | DESCRIPTION | QTY |
|------------|------------------|-----|
| BMSG0002 | Gold 15cm (6") | 24 |
| BMSG0003 | Gold 18cm (7") | 24 |
| BMSC0004 | Copper 18cm (7") | 24 |
| GSSS0001 | Silver 15cm (6") | 24 |
| GSSS0002 | Silver 18cm (7") | 24 |

Napkins

Happy Tree 100% Recycled Paper Napkins
Eco-friendly napkins with a lovely soft feel, these are practical and absorbent. Perfect for wiping post-lunch fingers and mouths, or for informal serving. Made in a soft brown colour, these are unbleached and produced using 100% recycled fibre. Available in 3 popular sizes.



| SUPPLIER CODE | DESCRIPTION | QTY |
|---------------|-------------------------------------|--------|
| 241RCHT | 23cm Ultra Ply Cocktail Napkin | 10x300 |
| 3314RCHT | 32cm Ultra Ply Lunch Napkin | 10x200 |
| 4014RCHT | 40cm Ultra Ply Dinner Napkin | 10x200 |
| 4018RCHT | 40cm Ultra Ply Dinner Napkin 8-Fold | 10x200 |



Did you know?

The EU single-use plastics directive includes a total ban on plastic straws, stirrers, cutlery and plastic stemmed cotton buds by July 2021. Parts of the UK have improved this and introduced a ban on the sale of these items from April 2020. The ban includes exemptions to ensure that those with medical needs or a disability are able to continue to access plastic straws, etc.

Cold Cups

Paper Cups

Conventional paper-based cups are usually lined with a membrane of polyethylene (plastic) to make them waterproof, which means they are not recyclable alongside other papers or cards.

Hula PLA Lined Paper Cups & Lids

Each sleeve has a vibrant mix of colours: tropical mango, big island blue, Vegware green and hibiscus pink dependant on size. Great for cold drinks - juice, fizzy drinks, beer, cocktails, or water. Also ideal for hot snacks to go. Sustainable board, lined on both sides with plant-based PLA. Bold party colours with a geometric leaf pattern, inspired by Hawaiian vegetation. Fully commercially compostable.



| STOCK CODE | DESCRIPTION | QTY | STOCK CODE | DESCRIPTION | QTY |
|------------|-------------|------|------------|-----------------------------------|------|
| DVHP0001 | 25cl (9oz) | 1000 | DVFL0001 | Flat Lid No Hole 9-12oz | 1000 |
| DVHP0002 | 34cl (12oz) | 1000 | DSCCL009 | Domed Lid No Hole 9-12oz | 1000 |
| DVHP0003 | 45cl (16oz) | 1000 | DSCCL010 | Flat Lid With Straw Slot 16-22oz | 1000 |
| DVHP0004 | 63cl (22oz) | 1000 | DSCCL011 | Domed Lid With Straw Hole 16-22oz | 1000 |

Flexy-Glass

Flexy-Glasses are thin walled polypropylene tumblers that are crack resistant. The tumblers are designed with a step in the base, for maximum stackability, this also allows them to be easily pulled apart, making them the ideal choice in busy bars and areas where safety and speed of service are of primary importance. Flexy-Glasses are manufactured under strict hygienic conditions; the tumblers are sleeved to keep them clean and dust free.



| STOCK CODE | DESCRIPTION | QTY |
|------------|-----------------------|------|
| DPPFG007 | 8oz (7oz Lined) | 2000 |
| DPPFG012 | 1/2 Pint (10oz Lined) | 1000 |
| DPPFG010 | 1/2 Pint to Brim | 1000 |
| DPPFG0001 | 350ml to Brim | 700 |
| DPPFG023 | 23oz (1 Pint Lined) | 1000 |
| DPPFG020 | 1 Pint to Brim | 1000 |

Recycling one tonne of plastics saves enough energy to run a refrigerator for a month.

Manufacturing plastics from recycled materials uses 30% of the energy required to make virgin plastic products from fossil fuels.

rPET Cups

rPET cups boast 40% post consumer recycled content. rPET has a lower carbon footprint than virgin aluminium and glass, and maintains its clarity even after being recycled and reformed multiple times.



Tulip Tumblers

| STOCK CODE | DESCRIPTION | QTY |
|------------|---------------------|------|
| DGRP0001 | 23cl (8oz) | 1000 |
| DGRP0002 | 28cl (10oz) | 1000 |
| DGRP0003 | 34cl (12oz) | 1000 |
| DGRPL001 | Domed Lid With Hole | 1000 |
| DGRPL002 | Domed Lid No Hole | 1000 |



Squat Tumblers

| STOCK CODE | DESCRIPTION | QTY |
|------------|--------------------------|------|
| DGRP0004 | 25.6cl (9oz) | 1000 |
| DGRP0005 | 34-40cl (12-14oz) | 1000 |
| DGRPL003 | Flat Lid With Straw Slot | 1000 |
| DGRPL004 | Flat Lid No Hole | 1000 |



Tumblers

| STOCK CODE | DESCRIPTION | QTY |
|------------|--------------------------|------|
| DGRP0006 | 45cl (16oz) | 1000 |
| DGRP0007 | 57cl (20oz) | 1000 |
| DGRPL005 | Flat Lid With Straw Slot | 1000 |
| DGRPL006 | Flat Lid No Hole | 1000 |

Green Tree PLA Cups

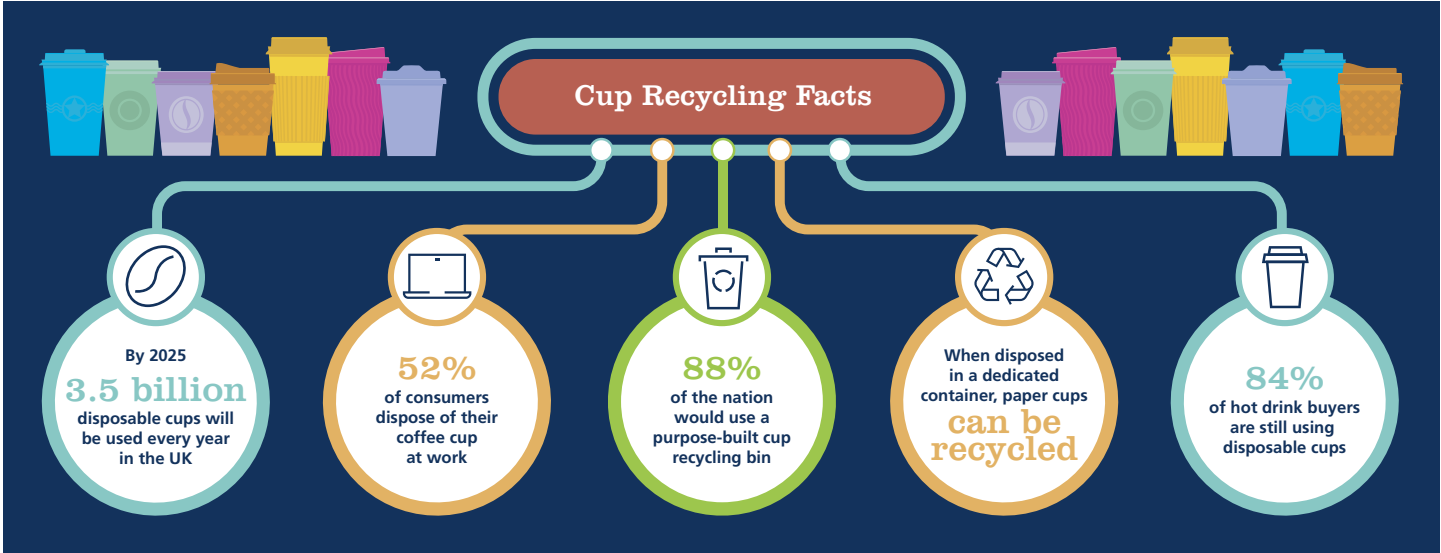
The Green Tree collection is an award-winning compostable packaging, with a green tree motif celebrating its eco credentials. These cups are made from 100% PLA making them fully commercially compostable.



| STOCK CODE | DESCRIPTION | QTY |
|------------|-------------|------|
| DGTPL009 | 25cl (9oz) | 1000 |
| DGTPL012 | 34cl (12oz) | 1000 |
| DGTPL020 | 57cl (20oz) | 1000 |

Compatible domed and flat lids are also available for this range.





Hot Cups

Although made from paper, some hot cups are lined with PE (Polyethylene or Polythene) which needs to be separated from the cup before being recycled. This process is time consuming, costly and requires specialised equipment meaning PE lined hot cups are not widely recyclable.

Single Wall Hot Cups

Kraft
Sustainable board with a plant-based PLA lining.



| STOCK CODE | DESCRIPTION | QTY |
|------------|---------------|------|
| DPCKB0002 | 22.7cl (8oz) | 1000 |
| DBHC0001 | 34cl (12oz) | 1000 |
| DHBC0002 | 45.5cl (16oz) | 1000 |

White
Fully compostable.



| STOCK CODE | DESCRIPTION | QTY |
|------------|---------------|------|
| DPCK0002 | 22.7cl (8oz) | 1000 |
| DPCK0001 | 34cl (12oz) | 1000 |
| DDWW0016 | 45.5cl (16oz) | 1000 |

I'm A Green Cup
Made from certified FSC board with a starch material, these are 100% compostable.



| STOCK CODE | DESCRIPTION | QTY |
|------------|-------------|------|
| DGHC0008 | 22cl (8oz) | 1000 |
| DGHC0012 | 34cl (12oz) | 1000 |
| DGHC0016 | 45cl (16oz) | 1000 |

Double Wall Hot Cups

I'm A Green Cup

Made from certified FSC board with a starch based compostable lining, this cup is 100% compostable.



| STOCK CODE | DESCRIPTION | QTY |
|------------|-------------|-----|
| DGHD0008 | 22cl (8oz) | 500 |
| DGHD0012 | 34cl (12oz) | 500 |

Kraft

Two layers of sustainable board with a plant-based PLA lining.



| STOCK CODE | DESCRIPTION | QTY |
|------------|-------------|-----|
| DDWC0006 | 22cl (8oz) | 500 |
| DDWK0012 | 34cl (12oz) | 500 |
| DDWK0016 | 45cl (16oz) | 400 |

Green Tree

Made from plants, not plastic, these cups are low carbon and made from renewable materials.



| STOCK CODE | DESCRIPTION | QTY |
|------------|-------------|-----|
| DGTC0008 | 22cl (8oz) | 500 |
| DGTC0012 | 34cl (12oz) | 500 |

Paper Hot Cup Lids

Made from sustainably sourced paper and lined with bio-based, moisture resistant BioPBS. Featuring an innovative pull-back tab, they're perfect for hot drinks on-the-go. Fit Vegware hot cups.



| STOCK CODE | DESCRIPTION | QTY |
|------------|-------------|------|
| DVPL0001 | 79 Series | 1000 |
| DVPL0002 | 89 Series | 1000 |

Triple Wall Hot Cups

Edenware® Ribbed Ripple Wall

Edenware® is a new brand of renewable and compostable food packaging lined with a plant-based Polylactic Acid (PLA) offering a much lower carbon footprint than their conventional counterparts. Single and double walled options are also available in this range.



DGCC0001
22cl (8oz)
1x500



DGCC0002
34cl (12oz)
1x500



DGCC0003
45cl (16oz)
1x500



Biodegradable Ripple Wall

With bagasse lids available, these cups are PE free and meet ASTM 5511/6400 standards. They can be easily recycled, are home and industrially compostable, as well as being biodegradable.



| STOCK CODE | DESCRIPTION | QTY |
|------------|------------------|------|
| DHBC0001 | Kraft 22cl (8oz) | 500 |
| DHBC0003 | Black 22cl (8oz) | 500 |
| DHBL0001 | Bagasse Lid 80mm | 1000 |



| STOCK CODE | DESCRIPTION | QTY |
|------------|-------------------|------|
| DHBC0004 | Kraft 34cl (12oz) | 500 |
| DHBC0005 | Black 34cl (12oz) | 500 |
| DHBL0002 | Bagasse Lid 90mm | 1000 |



Half a trillion disposable cups are manufactured annually around the world; that's over 70 disposable cups for every person on the planet.





Did you know?

From July 2021 all plastic and CPLA single use cutlery will be banned across Europe. See pages 2 and 3 for more information on the European single use plastic directive. The UK had introduced elements of this from April 2020. This earlier deadline covered straws, disc stirrers and plastic stemmed cotton buds.



Cutlery

Wooden

100% FSC certified wood cutlery is a stylish, eco-friendly alternative to conventional disposable cutlery. Wrapped sets are also available, contact your local Alliance to discuss further.



| STOCK CODE | DESCRIPTION | QTY | STOCK CODE | DESCRIPTION | QTY |
|------------|-------------|------|------------|--------------|------|
| DWF00160 | Fork | 1000 | DWS00170 | Spork 14.4cm | 1000 |
| DWK00160 | Knife | 1000 | DCW03001 | Chip Fork | 1000 |
| DWS00160 | Spoon | 1000 | DCT00005 | Stirrer 14cm | 1000 |
| DWT00140 | Teaspoon | 1000 | DCT00004 | Stirrer 18cm | 1000 |



Paper Bags

From April 2021, the Government increased the charge for single-use plastic bags to a minimum of 10p. Paper bags are an environmentally friendly alternative to offer customers.



Kraft

| | |
|----------|-------------|
| CBH00012 | 8.5x13x10" |
| CBH00001 | 10x15.5x12" |
| 1x250 | 1x250 |



White

| | |
|----------|-------------|
| CBH00011 | 8.5x13x10" |
| CBH00013 | 10x15.5x12" |
| 1x250 | 1x250 |



| | |
|-------------------|--|
| Green Tree | |
| DGTC0100 | |
| 22x11x25cm | |
| 1x250 | |



Candy Striped

| STOCK CODE | DESCRIPTION | QTY | STOCK CODE | DESCRIPTION | QTY |
|------------|------------------|-----|------------|-------------------|-----|
| DSCS0001 | Aqua 18x8x23cm | 50 | DSCS0005 | Aqua 25x14x30cm | 50 |
| DSCS0002 | Lime 18x8x23cm | 50 | DSCS0006 | Lime 25x14x30cm | 50 |
| DSCS0003 | Purple 18x8x23cm | 50 | DSCS0007 | Purple 25x14x30cm | 50 |
| DSCS0004 | Pink 18x8x23cm | 50 | DSCS0008 | Pink 25x14x30cm | 50 |

Food Containers

Compostable

Made from sustainably sourced board with a plant-based PLA lining. Lids are also available, contact your Alliance representative to discuss options and arrange samples.



| STOCK CODE | DESCRIPTION | QTY | STOCK CODE | DESCRIPTION | QTY |
|------------|-------------|------|------------|-------------------------|-----|
| DSCC0006 | 17cl (6oz) | 1000 | DSCC0024 | 70cl (24oz) | 500 |
| DCSC0008 | 22cl (8oz) | 1000 | DVBA0001 | Bon Appetit Bowl (32oz) | 300 |
| DSCC0012 | 34cl (12oz) | 500 | DVBA0002 | Bon Appetit Vented Lid | 300 |
| DSCC0016 | 45cl (16oz) | 500 | | | |



EPP

EPP (Expanded Polypropylene) is a fantastic alternative to EPS. EPP is microwavable, freezable and recyclable.



| STOCK CODE | DESCRIPTION | QTY |
|------------|-----------------------------------|-----|
| CFPP0001 | Food Box 17.3x13.5x7.5cm HP2 | 250 |
| CFPP0002 | Burger Box 15x15x7.5cm HP6 | 250 |
| CFPP0003 | Food Box 24.1x15.4x7.3cm HP3 TT10 | 250 |

Eco-Fibre

The base material is a by-product of wheat (using the straw and not the grain) and is certified gluten free. Unbleached, it is preferable to paper and wood pulp and fits within the EU Environmental Policy; a directive which favours the use of agricultural waste.



| STOCK CODE | DESCRIPTION | QTY |
|------------|----------------------------|------|
| DPEF0001 | Plate 18cm | 1000 |
| DPEF0002 | Plate 23cm | 1000 |
| DPEF0004 | Plate 25cm | 1000 |
| DPEF0005 | Bowl 34cl (12oz) | 1000 |
| DPEF0006 | Bowl 40cl (13.5oz) | 1000 |
| DPEF0007 | Large Food Box 22.5x16.5cm | 250 |
| DPEF0008 | Burger Box 14x14cm | 500 |



Eco-Fibre is certified for home composting



Bagasse
Suitable for hot, cold or oily foods, bagasse meal boxes are made from renewable sugar cane and reed which are completely compostable after use, and can be disposed of with food waste. Can be recycled with cardboard if they're clean with no food residue.



| STOCK CODE | DESCRIPTION | QTY |
|------------|------------------------------------|-----|
| CBCB0057 | Hinged Meal Box 7x5" | 500 |
| CBCB1097 | Hinged Meal Box 9x6" | 250 |
| CBCB0963 | 2 Compartment Hinged Meal Box 9x6" | 200 |
| DCSBB001 | Burger Box 4.75x4.75" | 500 |
| CCLBB001 | Burger Box 6x6" | 500 |
| DBCT0007 | Chip Tray 7x5" | 500 |



BePulp Food Containers & Lids
BePulp is a range of innovative products made from bagasse (sugar cane residue), a natural material which is both abundant and renewable. The entire range is certified for composting according to regulation EN 13432. Bases can be recycled with cardboard if they're clean with no food residue.



| STOCK CODE | DESCRIPTION | QTY |
|------------|---|-----|
| DBPC0013 | 2 Compartments 23x16x5cm (550ml & 250ml) | 300 |
| DBPC0002 | Domed Lid for 2 Compartments 23x16cm | 300 |
| DBPC0014 | 3 Compartments 23x23x4cm (500ml, 200ml & 200ml) | 300 |
| DBPC0004 | Domed Lid for 3 Compartments 23x23cm | 300 |
| DBPC0001 | Rectangle 23x16.5cm 950ml | 300 |
| DBPC0005 | Square Bowl 13cm (375ml) | 500 |
| DBPC0006 | Lid for Square Bowl 13cm | 500 |
| DBPC0007 | Square Bowl 17cm (750ml) | 300 |
| DBPC0008 | Lid for Square Bowl 17cm | 300 |
| DBPC0009 | Round Bowl 15cm (500ml) | 500 |
| DBPC0010 | Lid for Round Bowl 15cm | 500 |

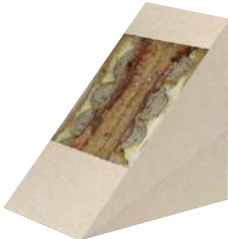
Sandwich Packaging

100% rPET



| STOCK CODE | DESCRIPTION | QTY |
|------------|-----------------------|-----|
| DSS00090 | Standard 16x5.5x8.5cm | 500 |
| DSS00010 | Deep 16x6.5x8.5cm | 500 |
| DST00001 | Triple 16.9x9x9.2cm | 500 |

Compostable



| STOCK CODE | DESCRIPTION | QTY |
|------------|----------------|-----|
| DKSW0001 | Kraft Standard | 500 |
| DKSW0002 | Kraft Deep | 500 |

Tortilla Sleeves



| STOCK CODE | DESCRIPTION | QTY |
|------------|-------------|------|
| CBWTK002 | 22.4x8.9cm | 1000 |
| CBWTS002 | 10.7x13cm | 1000 |
| CBWTS004 | 22.5x10.3cm | 1000 |



Salad Bowls

100% rPET Hinged Twist Bowls



| STOCK CODE | DESCRIPTION | QTY |
|------------|-------------|-----|
| DTSB2500 | 250ml | 600 |
| DTSB3750 | 375ml | 600 |
| DTSB0050 | 500ml | 200 |
| DTBS7500 | 750ml | 200 |

PLA Hinged Lid Containers



| STOCK CODE | DESCRIPTION | QTY |
|------------|-------------|-----|
| DBWS0002 | 250ml | 300 |
| DBWC0500 | 500ml | 300 |
| DBWC0751 | 750ml | 224 |

Compostable Kraft Salad Bowls

Our kraft salad bowls are 100% compostable with recyclable rPET lids.



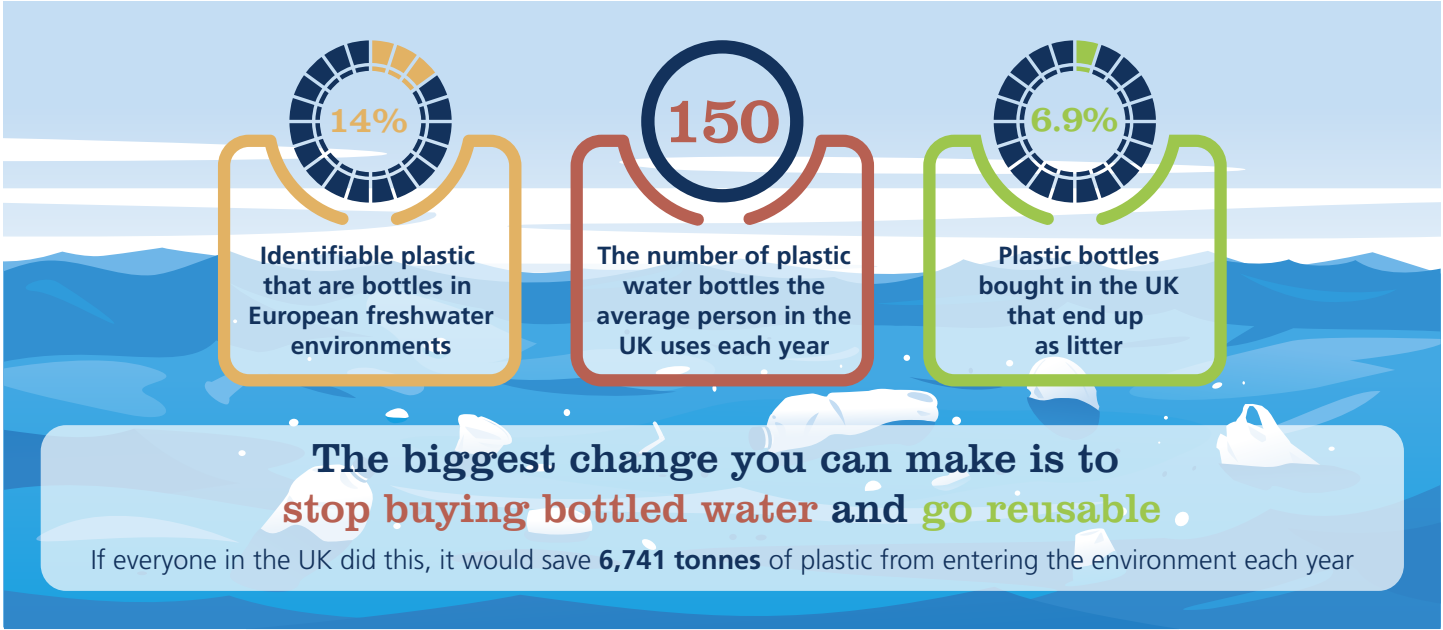
| STOCK CODE | DESCRIPTION | QTY |
|------------|--------------------|-----|
| DBSB2001 | 750ml | 400 |
| DBSB2002 | 1000ml | 400 |
| DBSB2003 | 1300ml | 200 |
| DBSBL101 | Lid for 750/1000ml | 400 |
| DBSBL102 | Lid for 1300ml | 200 |



Did you know?

rPET plastic is very sustainable, it can be completely recycled. This means that rPET products have a lower carbon footprint than virgin PET plastic, and it takes less energy to recycle and create an rPET item than to manufacture its virgin PET counterpart.





Reusable Bottles

Investing in a reusable water bottle is a sure way to help the environment. They use fewer resources, emit less harmful gas, and protect water sources. In addition to this, using a reusable water bottle is cheaper than buying single-use plastic water bottles.

BRITA Fill & Go Vital

BRITA offer these fantastic water bottles for when you need a drink on the go. These stylish bottles incorporate BRITA's leading MicroDisc technology, with one lasting for up to four weeks. Made from high quality BPA-free plastics and are also dishwasher safe.



| STOCK CODE | DESCRIPTION | QTY |
|------------|---------------------|------|
| DBWB0004 | Purple 60cl (21oz) | Each |
| DBWB0003 | Lime 60cl (21oz) | Each |
| DBWB0002 | Blue 60cl (21oz) | Each |
| DBWB0001 | Pink 60cl (21oz) | Each |
| DBWB0009 | 3 MicroDisc Filters | Each |

BRITA Fill & Go Active

Great for all scenarios, particularly the gym. Being made from high quality BPA-free plastics makes them a safer option. The bottles are also dishwasher safe and feature an adjustable pull out mouthpiece.



| STOCK CODE | DESCRIPTION | QTY |
|------------|---------------------|------|
| DBWB0008 | Purple 60cl (21oz) | Each |
| DBWB0007 | Lime 60cl (21oz) | Each |
| DBWB0006 | Blue 60cl (21oz) | Each |
| DBWB0005 | Pink 60cl (21oz) | Each |
| DBWB0009 | 3 MicroDisc Filters | Each |

Atlantis Lidded Bottles

Utopia's Atlantis bottles offer a modern and stylish alternative to traditional jugs or carafes. Ideal for serving water or juices in an upmarket and trendy way. These lidded bottles are ideal for preparing and serving pre-made beverages.



| STOCK CODE | DESCRIPTION | QTY |
|------------|-------------|-----|
| LAWB0005 | 0.5Ltr | 12 |
| LAWB0004 | 1Ltr | 12 |

Polycarbonate Vision Bottle

Polycarbonate drinkware that's as stylish as glassware but with the practicality of being stain, break, and chip resistant.



| STOCK CODE | DESCRIPTION | QTY |
|------------|-------------|-----|
| DUVB0001 | 1Ltr (35oz) | 12 |

Reusable Hot Cups



Rice Husk Cups

Utilising an often discarded by-product of rice, the Reusable Rice Husk Cup has the look and durability of plastic whilst providing natural insulation for hot beverages on-the-go. Not only formed of a natural resource, at the end of the lifespan, cups can be buried in soil, taking approximately 2-3 years to biodegrade or ground up and put into industrial compost where it takes approximately 90 days to biodegrade. Custom printing also available.



| STOCK CODE | DESCRIPTION | QTY |
|------------|--------------------|------|
| DFRH00001 | Blue 40cl (14oz) | Each |
| DFRH00002 | Red 40cl (14oz) | Each |
| DFRH00003 | Green 40cl (14oz) | Each |
| DFRH00004 | Purple 40cl (14oz) | Each |
| DFRH00005 | Brown 40cl (14oz) | Each |
| DFRH00006 | Grey 40cl (14oz) | Each |
| DFRH00007 | Black 40cl (14oz) | Each |



Corretto Cups

Made from polypropylene and featuring EcoCore® technology, these cups are durable and robust, perfect for multiple use. They can be easily recycled in worldwide plastic recycling bins and can even be collected through home recycling collections.



| STOCK CODE | DESCRIPTION | QTY |
|------------|------------------------|------|
| DFCC0001 | Lime Green 34cl (12oz) | 96 |
| DFCC0002 | Blue 34cl (12oz) | 96 |
| DFCC0003 | Pink 34cl (12oz) | 96 |
| DFCC0004 | White 34cl (12oz) | 96 |
| DFCL001 | White Reusable Lid | 1000 |

Colours and design are subject to change.



Reusable Coffee Cups

Encourage people to stop using disposables and help protect our environment. Our 350ml cups are 100% recyclable and antibacterial, providing durable 24 hour product protection against the growth of harmful micro-organisms on the cup's surface.

Cups and sleeves are available in Lime Green, Red, Orange, White, Royal Blue, Purple, Gold, Copper, Dark Grey, Silver, and Black. Contact us to discuss colour options.

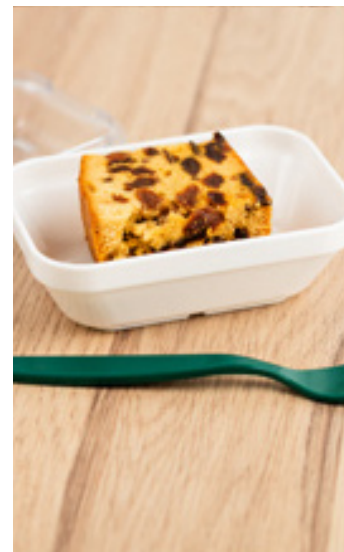
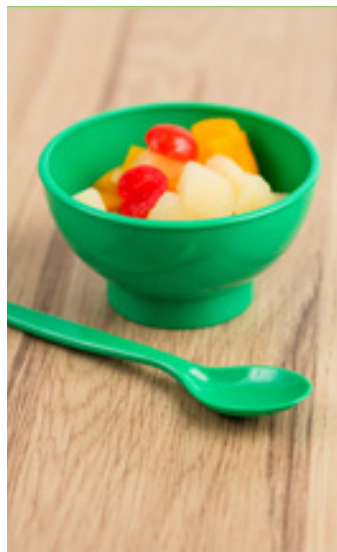
Product details available on request.



Did you know?

Alliance have a wide variety of reusable bottles and drinkware available to suit all budgets, styles and uses. Alliance are passionate about reducing waste, and are happy to help source a reusable solution that fits your needs if a solution isn't already available.





Harfield Polycarbonate Closed Loop Recycling

Polycarbonate is long lasting, virtually unbreakable and 100% recyclable, though due to its plastic class of “7- Other” many recycling facilities won’t accept it. Sustainability is vitally important to Harfield, one of Alliance’s partner suppliers for polycarbonate, and we are very pleased to announce that Harfield offers a recycling service for customers*.

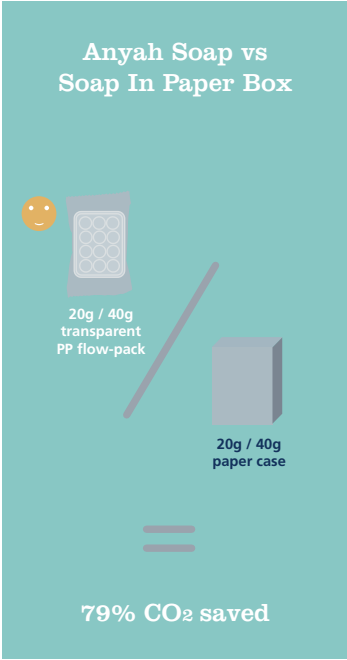
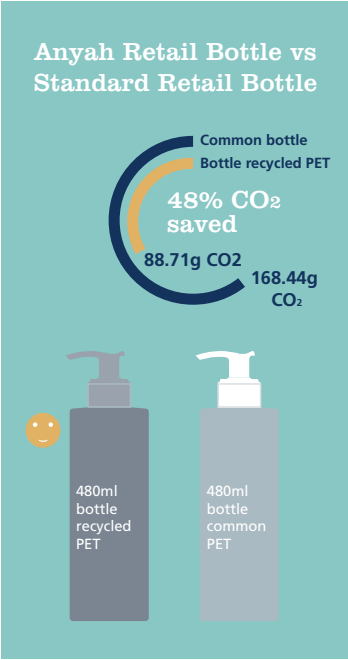
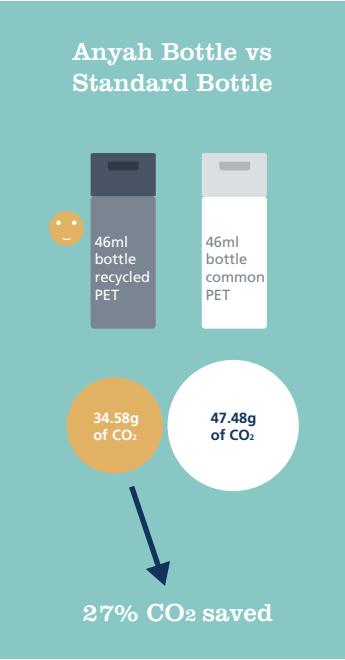
Harfield are always looking for new, innovative ways to make their products as sustainable and environmentally friendly as possible. Providing a greener tableware solution to customers is a key aspect of their philosophy and they pride themselves on assisting customers with a more sustainable future.

If you would like to take advantage of this service that will help reduce your carbon footprint, here is how it works:

- E-mail info@harfieldtableware.co.uk to request a recycling form to start the process.
- Once you have completed the recycling form, advising how much there is to collect and when/where it will be ready for collection, Harfield will arrange the collection with one of their couriers. A transportation cost applies. The goods will be returned to Harfield and they will send you a certificate for recycling with them.
- For customers with larger amounts (over 50kg) to return from a central point, please contact us for further information.
- Tableware returned for recycling will be converted to non-food uses.

***PLEASE NOTE:** Harfield will recycle all products with Harfield or Roltex name on the base, excluding Roltex s-planks, laminate or polyester trays. Harfield do not recycle Kristallon or other brands of polycarbonate. They do not recycle melamine or other types of plastic or kitchenware. Non-Harfield products will not be recycled and an invoice for £50 minimum would be raised for the delivered and non-recycled goods.





Guest Supplies

Anyah
Anyah is an eco-friendly amenities collection with the goal of reducing plastic waste generated by hotels, whilst still offering premium products.



Massage Vegetable Soap Bar
Massage vegetable soap, without EDTA-DTPA, enriched with jojoba oil. The formula has a high compatibility with the skin thanks to the high quality ingredients with proven environmental sustainability.



| STOCK CODE | DESCRIPTION | QTY |
|------------|-------------|-----|
| GADP0006 | 20g | 300 |
| GADP0007 | 40g | 175 |



Paper Boxed Accessories
The packaging is made of recycled paper (85%) and paper pulp (15%), printed using a soy-based ink.



| SUPPLIER CODE | DESCRIPTION | QTY |
|---------------|---------------------------------------|-----|
| E039AY | Dental Kit | 320 |
| C032AY | Shower Cap | 490 |
| C037AY | Sewing Kit | 450 |
| E0310AY | Shaving Kit | 320 |
| D039AY | Round Cotton Discs | 490 |
| DE032AY | Cotton Buds & Nail File (Paper Stems) | 450 |
| F031AY | Shoe Shine Sponge | 240 |
| K035AY | Tangram Kit* | 140 |

*Contains: C032AY, F031AY, D039AY, DE032AY, C037AY.





Dispenser Bottles

| SUPPLIER CODE | DESCRIPTION | QTY |
|---------------|----------------------------|-----|
| FLR500RMAY | Hair & Body Shampoo 480ml | 18 |
| FLR500RSAY | Conditioning Shampoo 480ml | 18 |
| FLR500RBAY | Body Wash 480ml | 18 |
| FLR500RBSAY | Body Scrub 480ml | 18 |
| FLR500RBLAY | Hand & Body Lotion 480ml | 18 |
| FLR500RCAY | Conditioner 480ml | 18 |
| FLR500RLMAY | Liquid Hand Soap 480ml | 18 |

Wall Dispenser Accessories

| SUPPLIER CODE | DESCRIPTION | QTY |
|---------------|-------------------------------------|------|
| FLP_TR | Transparent Pump | 100 |
| SFU_S | Stainless Steel Single Wall Bracket | Each |



100% Post Consumer Recycled PET Bottles

| SUPPLIER CODE | DESCRIPTION | QTY |
|---------------|---------------------------|-----|
| P52RMAY | Hair & Body Wash 46ml | 216 |
| P52RSAY | Conditioning Shampoo 46ml | 216 |
| P52RBAY | Body Wash 46ml | 216 |
| P52RBSAY | Body Scrub 46ml | 216 |
| P52RBLAY | Body Cream 46ml | 216 |
| P52RCAY | Conditioner 46ml | 216 |

Doypacks

The Anyah range takes into account its environmental impact with a proven Life Cycle Assessment shown directly on the label. The Life Cycle Assessment (LCA) is an innovative approach that has allowed the manufacturer to calculate the environmental impact of Anyah's packaging through the product's entire life cycle. A 30ml doypack produces 68% less waste CO2 than an equivalent sized standard plastic miniature bottle.



Primary Cosmetics

| STOCK CODE | DESCRIPTION | QTY |
|------------|---------------------------|-----|
| GADP0001 | Body Wash 30ml | 200 |
| GADP0003 | Conditioning Shampoo 30ml | 200 |
| GADP0004 | Body Lotion 30ml | 200 |
| GADP0005 | Conditioner 30ml | 200 |

Flexible Band For Doypacks

| SUPPLIER CODE | DESCRIPTION | QTY |
|---------------|-------------|-----|
| ESP3AY | 3 Hole | 250 |
| ESP4AY | 4 Hole | 200 |





Geneva Green

Geneva Green is unique in its circular design approach. Bottles and caps are made with 100% post-consumer recycled plastic and decorated with labels that can easily be separated from the bottle during the recycling process. The soap wrapping is made with 100% recyclable paper, resulting in zero waste to landfill.



Miniatures

| STOCK CODE | DESCRIPTION | QTY |
|------------|------------------|-----|
| GGRE0001 | Body Wash 30ml | 300 |
| GGRE0002 | Shampoo 30ml | 300 |
| GGRE0003 | Body Lotion 30ml | 300 |
| GGRE0004 | Conditioner 30ml | 300 |
| GGRE0005 | Body Wash 40ml | 216 |
| GGRE0006 | Shampoo 40ml | 216 |
| GGRE0007 | Body Lotion 40ml | 216 |
| GGRE0008 | Conditioner 40ml | 216 |
| GGRE0010 | Soap 15g | 300 |
| GGRE0009 | Soap 30g | 260 |

Cartridge Dispensers

| STOCK CODE | DESCRIPTION | QTY |
|------------|------------------------|-----|
| GGRE0011 | Liquid Hand Soap 360ml | 18 |
| GGRE0012 | Hair & Body Wash 360ml | 18 |
| GGRE0013 | Body Wash 360ml | 18 |
| GGRE0014 | Shampoo 360ml | 18 |
| GGRE0015 | Body Lotion 360ml | 18 |
| GGRE0016 | Conditioner 360ml | 18 |



Soft Care Select

The Soft Care Select system brings the sense of luxury into guest bathrooms, allowing your guests to enjoy the mild and gentle properties. It is cost effective and an easy to use wall-mounted amenity system.



| STOCK CODE | DESCRIPTION | QTY |
|------------|---|-----|
| CSHB0036 | Soft Care Gentle 2-in-1 Hair & Body Shampoo 300ml | 28 |
| CSHB0037 | Soft Care Gentle Mild Hand Wash 300ml | 28 |
| CSHB0011 | Dove Cream Wash 300ml | 28 |
| CSHB0028 | Dove Cream Shower 300ml | 28 |
| CSHB0015 | Lux 2-in-1 Shower Gel & Shampoo 300ml | 28 |
| CHSD0045 | White Bracket | 10 |
| CHSD0047 | Chrome Bracket | 10 |

Soft Care Sensations

The Soft Care Sensations Dove and Lux range delivers pure indulgence and will positively enhance the total customer experience. The easy to use dispensing system means the system can be operated by either pushing or squeezing the bottles, providing ease of dispensing to all guests.



| STOCK CODE | DESCRIPTION | QTY |
|------------|---------------------------------------|------|
| CSEN0001 | Lux 2-in-1 Conditioning Shampoo 250ml | 24 |
| CSEN0002 | Lux Hand Soap 250ml | 24 |
| CSEN0004 | Dove Go Fresh Handwashing Cream 250ml | 24 |
| CSHB0086 | Dove Go Fresh Body Wash 250ml | 24 |
| CSEN0006 | Dove Cream Wash 250ml | 24 |
| CSEN0001 | Wall Bracket Chrome | Each |

Bulk Refills



Elements

Subtly scented with passionfruit and frangipani.

Pump Bottles

| STOCK CODE | DESCRIPTION | QTY |
|------------|------------------------|-----|
| ELEM0005 | Liquid Soap 300ml | 20 |
| ELEM0006 | Hand Lotion 300ml | 20 |
| ELEM0010 | Hair & Body Wash 300ml | 20 |

Pump Bottle Refills

| STOCK CODE | DESCRIPTION | QTY |
|------------|-------------------------|------|
| ELEM0008 | Liquid Soap 5Ltr | Each |
| ELEM0007 | Hair & Body Wash 5Ltr | Each |
| ELEM0009 | Hand & Body Lotion 5Ltr | Each |



Aqueous

An infusion of invigorating minty mandarin fragrance.

Pump Bottles

| STOCK CODE | DESCRIPTION | QTY |
|------------|------------------------|-----|
| AQUE0005 | Liquid Soap 300ml | 20 |
| AQUE0006 | Hand Lotion 300ml | 20 |
| AQUE0010 | Hair & Body Wash 300ml | 20 |

Pump Bottle Refills

| STOCK CODE | DESCRIPTION | QTY |
|------------|-------------------------|------|
| AQUE0008 | Liquid Soap 5Ltr | Each |
| AQUE0007 | Hair & Body Wash 5Ltr | Each |
| AQUE0009 | Hand & Body Lotion 5Ltr | Each |

Refresh



| STOCK CODE | DESCRIPTION | QTY |
|------------|------------------------------------|------|
| SPAS0002 | Apple Hair & Body Shampoo 5Ltr | Each |
| SPCH0007 | Chamomile Hair & Body Shampoo 5Ltr | Each |
| SPCS0003 | Coconut Hair & Body Shampoo 5Ltr | Each |
| SPFL0005 | Lemon Hair & Body Shampoo 5Ltr | Each |
| SPHS0004 | Herbal Hair & Body Shampoo 5Ltr | Each |
| SPTT0006 | Tea Tree Hair & Body Shampoo 5Ltr | Each |



Wall Dispensers

Aviva Lockable Dispensers

The Aviva dispensers are available with a single, double or triple chamber and include a push-button pump that pre-measures just the right amount of soap to minimise waste.



| STOCK CODE | DESCRIPTION | QTY |
|------------|------------------------------------|------|
| CCSD0001 | Aviva I Single Dispenser 1x350ml | Each |
| CCSD0002 | Aviva II Double Dispenser 2x350ml | Each |
| CCSD0003 | Aviva III Triple Dispenser 3x350ml | Each |
| CCSDL001 | Aviva Lid for Chrome Dispenser | Each |

Liquid Soap Dispensers

Single chamber push button soap dispensers available in 3 sizes. Save on single-use plastics and excessive wasting of products with pre-measured dosage of liquid soaps, body washes and shampoos.



| STOCK CODE | DESCRIPTION | QTY |
|------------|--|------|
| SPCD0020 | Chrome Top Dispenser 350ml | Each |
| SPCD0002 | Chrome Top Dispenser 170ml | Each |
| SPCD0003 | Chrome Dispenser 800ml | Each |
| SPCD0001 | Chrome Dispenser 1.1Ltr | Each |
| SPCD0005 | White Dispenser 1.1Ltr | Each |
| SPCD0006 | Transparent Dispenser White Top 1.1Ltr | Each |

Simplehuman

Available in single, double or triple, these Simplehuman pump dispensers are a stylish and simple addition to any washroom, bathroom or shower. The ergonomic, durable diecast t-bar level makes it easy to dispense just the right amount of soap, shampoo or conditioner. A convenient storage hook can be found on the side for holding a razor, loofah or other accessories. The wide opening makes refills fast, easy and spill-free. The dispensers will be looking like new for a long time due to it's rust-proof stainless steel and anodised aluminium construction.



| STOCK CODE | DESCRIPTION | QTY |
|------------|-------------------------------|------|
| CWMO0001 | Single Pump Dispenser 444ml | Each |
| CWMP0002 | Double Pump Dispenser 2x444ml | Each |
| CWMP0003 | Triple Pump Dispenser 3x444ml | Each |
| CLHS0001 | Lavender Hand Soap Pouch 1Ltr | Each |



Refill and Reuse

Throwing away disposable plastic pumps over and over is hard on the hard environment – and your wallet. Simplehuman's resealable soap pouches are a smarter way to buy soap.



Hotel Bathroom

Eco Knit Towels

Weight for weight, a longer more luxurious pile and better absorption properties than woven towels.

Eco Knit guarantees:

- No holes.
- No frayed edges.
- No snagging loops.
- Towels dry up to 40% faster.
- Requires up to 15% less water to wash.
- 2-3 times longer product life than standard towels.

Contact your local Alliance to organise a case study today.
This could show a reduction in labour, energy and water usage.

| STOCK CODE | DESCRIPTION | SIZE | WEIGHT | QTY |
|------------|------------------|-----------|--------|-----|
| GEKT0001 | White Hand Towel | 50x90cm | 450gsm | 50 |
| GEKT0002 | White Bath Towel | 70x130cm | 450gsm | 25 |
| GEKT0003 | White Bath Sheet | 100x150cm | 450gsm | 16 |
| GEKT0004 | White Hand Towel | 50x90cm | 550gsm | 45 |
| GEKT0005 | White Bath Towel | 70x130cm | 550gsm | 20 |



Microterry Bathrobe

The luxurious, fluffy microterry bathrobe is softer than cotton and features double belt loops, a hanging loop and generous pockets, made from 100% polyester. Plastic bottles can be recycled, turned into polyester and made into clothing. The Microterry bathrobe uses this exact technology and is proud to say it's **made from 100% recycled plastic bottles**.



| STOCK CODE | DESCRIPTION | QTY |
|------------|-----------------------|------|
| GBRR0001 | Shawl Collar Bathrobe | Each |



Trolley Systems

Eco Matic Trolley System

The Eco Matic trolley range delivers Numatic's best value cleaning system. Ergonomically designed for enhanced usability, productivity and simplicity, the range offers a choice of 6 models to suit any cleaning need or environment. ReFlo Technology uses the highest quality recycled plastic to provide a tough Structofoam construction, ensuring they are both sustainably engineered and built to last.

- 100% Structofoam construction, tough and hygienic.
- Assembly in under 15 minutes.
- Compact and easy to store.
- Environmentally sustainable – ReFlo Technology uses the highest quality recycled plastic.
- 6 models to suit every cleaning need.



Short Base Trolley

| SUPPLIER CODE | DESCRIPTION | QTY |
|---------------|---------------------|------|
| 909657 | Mid Tray EM1 | Each |
| 909658 | 2x Sliding Bins EM2 | Each |



Long Base Trolley

| SUPPLIER CODE | DESCRIPTION | QTY |
|---------------|--|------|
| 909659 | Mid Tray EM3 | Each |
| 909660 | Twin 120Ltr Waste Bag & Mid Tray EM4 | Each |
| 909661 | 2x Sliding Bins EM5 | Each |
| 909662 | Twin 120Ltr Waste Bag & 2x Sliding Bin EM6 | Each |



18Ltr Bucket
& 200g Mop Basket
910439
SRK14
Each



34Ltr Bucket
& 200g Mop Basket
910440
SRK15
Each



Vertical Press with Foam Pad
& 2x17Ltr Bucket Set
910442
SRK16
Each



Contact your local Alliance to discuss
other accessories and configurations available

Colour Coded Recycling



| SUPPLIER CODE | DESCRIPTION | QTY |
|---------------|-------------|------|
| PROB0001 | 30Ltr | Each |
| PROB0003 | 48Ltr | Each |



| SUPPLIER CODE | DESCRIPTION | QTY |
|---------------|-------------|------|
| PROL0001 | Black | Each |
| PROL0002 | Blue | Each |
| PROL0003 | Yellow | Each |
| PROL0004 | Green | Each |
| PROL0005 | Grey | Each |
| PROL0007 | Red | Each |
| PROL0009 | Brown | Each |

| SUPPLIER CODE | DESCRIPTION | QTY |
|---------------|-----------------|------|
| PROS0002 | Paper | Each |
| PROS0003 | Plastic & Cans | Each |
| PROS0004 | General Waste | Each |
| PROS0006 | Plastics | Each |
| PROS0008 | Tins | Each |
| PROS0009 | Glass | Each |
| PROS0010 | Kitchen | Each |
| PROS0011 | All Recyclables | Each |



Customisable Recycling System



Colour Coding

A choice of 7 colours means colour coding is a breeze. Allowing you to create consistent visual cues for patrons and staff when sorting recyclables.



Blue

Red

Yellow

Green

Brown

Grey

Black



Lid Options

Restrictive lid shapes ensure the right recyclables get into the right bins. For an open top, no insert is needed.



Mixed Recycling



Paper



Bottles/Cans

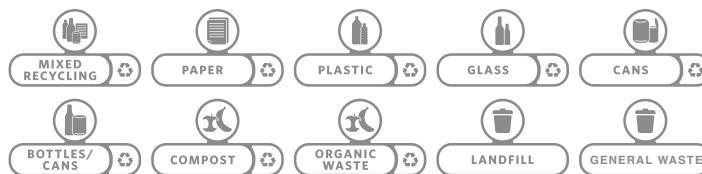


Closed



10 Waste Stream Labels

Expertly designed waste stream labels feature 3 visual cues: the recycling symbol, a waste stream icon and verbiage proven to increase recycling effectiveness. These adhere to colour coded billboard backs.



Hinged Lid Inserts

Accommodate larger sized recycling materials.



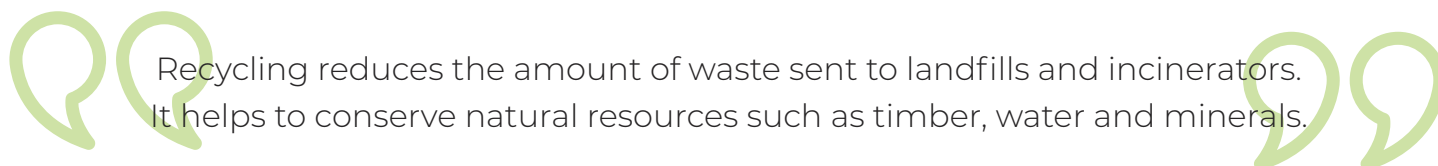
Venting Channels

Makes removing liners up to 80% easier.



Bag Cinches

Secure liners around the rim of the container and allow for quick change.



Option 1: Recycling Station Kits

Choose from 9 common recycling station kits, all incorporating bases, lid inserts and billboards.



2 Stream



3 Stream



4 Stream

| SUPPLIER CODE | DESCRIPTION | DIMENSION | LID TYPE | COLOUR | QTY |
|---------------|--|-----------------------|---------------------------------------|-----------------------------|------|
| 2057605 | 2 Stream, Landfill / Paper | W54xD60.96xH40.25cm | Closed Lid & Paper | Black & Blue | Each |
| 2057610 | 2 Stream, Landfill / Paper | W54.6xD61xH102.2cm | Closed Lid & Paper | Grey & Blue | Each |
| 2057733 | 2 Stream, Landfill / Paper | W54.6xD61xH102.2cm | Closed Lid & Paper | Grey & Yellow | Each |
| 2057607 | 3 Stream, Landfill / Paper / Plastic | W54.6xD91.4xH102.2cm | Closed Lid, Paper & Bottles/Cans | Black, Blue & Yellow | Each |
| 2057731 | 3 Stream, Landfill / Paper / Plastic | W54.6xD91.4xH102.2cm | Closed Lid, Paper & Bottles/Cans | Grey, Blue & Yellow | Each |
| 2057606 | 3 Stream, Landfill / Paper / Mixed | W54.6xD91.4xH102.2cm | Closed Lid, Paper & Mixed | Black, Blue & Green | Each |
| 2057608 | 4 Stream, Landfill / Paper / Plastic / Organic | W54.6xD121.9xH102.2cm | Closed Lid (x2), Paper & Bottles/Cans | Black, Blue, Yellow & Brown | Each |
| 2057609 | 4 Stream, Landfill / Paper / Plastic / Glass | W54.6xD121.9xH102.2cm | Closed Lid, Paper & Bottles/Cans (x2) | Black, Blue, Yellow & Green | Each |
| 2057732 | 4 Stream, Landfill / Paper / Plastic / Glass | W54.6xD121.9xH102.2cm | Closed Lid, Paper & Bottles/Cans (x2) | Grey, Blue, Yellow & Green | Each |

Option 2: Build Your Own Station

Step 1. Select A Starter Kit

Build your own station by selecting the starter kit which includes a base, lid and connector.



Starter Kit
2007913
Base, Lid & Connector
Each

Step 2. Colour Of Billboards & Lid Types

Restrictive lid shapes ensure the right recyclables get into the right bins.

- 7 colour options.
- 4 lid shapes available.
- Billboards available in each colour.



Step 3. Select Your Label Kit

Choose from ten waste stream labels to complete the system. Labels are available in 6 languages.



Cleaning Equipment

Recycled Spray Bottles

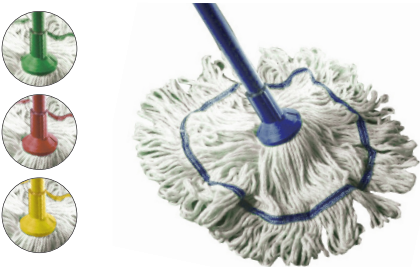
Post-consumer recycled (PCR) bottles are an eco-friendly way to dispense cleaning fluids without the waste and environmental impact of single-use plastic bottles. The 100% recycled and 100% recyclable r-HDPE spray bottle is made in the UK from milk bottles. The trigger sprayer is made from virgin plastic and can also be recycled. This means less waste at the end of the day, it removes disposable plastic from the UK's plastic waste economy, and takes less energy to manufacture the PCR resin than virgin plastic. Custom print available. Colour coded trigger bottles sold separately.



| SUPPLIER CODE | DESCRIPTION | QTY |
|---------------|-----------------------------|------|
| 104426 | 750ml Recycled Spray Bottle | Each |

Exel Revolution Mop Heads

A circular mop head with the Exel push fit socket. The Stayflat band holds the circular shape enabling the mop to cover a larger floor area, whilst the looped yarn prevents linting and tangling when in use. Made from a unique blend of polyester and cotton yarn for improved strength and absorbency. Available in various weights and colours. Washable up to 60 degrees.



| STOCK CODE | DESCRIPTION | QTY |
|------------|-------------|------|
| JEMH0001 | Blue 200g | Each |
| JEMH0004 | Green 200g | Each |
| JEMH0002 | Red 200g | Each |
| JEMH0003 | Yellow 200g | Each |

Exel Pure Yarn Mop Heads

A traditional yarn mop featuring the Exel push fitting, designed to avoid the mop slipping on the handle whilst wringing. Absorbent yarn is suitable for smoother floor surfaces like laminate or linoleum flooring, and is made from recycled cotton. Available in various weights and colours.



| STOCK CODE | DESCRIPTION | QTY |
|------------|-------------|------|
| JEMH0006 | Blue 300g | Each |
| JEMH0007 | Green 300g | Each |
| JEMH0008 | Red 300g | Each |

Cloths

Stockinette Cloths

Textile cleaning cloth suitable for all types of cleaning available in rolls or cut lengths. All stockinette is made from recycled cotton.



| STOCK CODE | DESCRIPTION | QTY |
|------------|---------------|-----|
| CCSB0001 | Blue 12x14" | 10 |
| CCSY0001 | Yellow 12x14" | 10 |
| CCSG0001 | Green 12x14" | 10 |

100% Compostable Cloths

The unique design and product features of the J-Cloth® Plus Biodegradable are based on the most renowned cleaning wipe, the J-Cloth® Plus. Its unique, open, wavy texture enables efficient pick-up of any dirt and makes it easy to rinse, ensuring longer freshness. In addition, this cleaning wipe is both compostable and biodegradable in accordance with the DIN EN 13432 200-12 standard.



| STOCK CODE | DESCRIPTION | QTY |
|------------|-------------|-----|
| HCEC3002 | Yellow | 50 |
| HCEC3005 | Green | 50 |
| HCEC3003 | Red | 50 |
| HCEC3004 | Blue | 50 |

Washable Stockinette Cloths

Made in the UK from recycled shredded cloth, diverting textile waste from landfill and giving it another use. With a high cotton content the dish cloth is durable, reusable and machine washable. Available in various colours, making it perfect for your colour coded cleaning requirements, with a purple stripe cloth available for allergen-free cleaning.



| STOCK CODE | DESCRIPTION | QTY |
|------------|--------------------|------|
| HCCP0005 | Purple Stripe 800g | 10 |
| HCCR0003 | Red Stripe 800g | 10 |
| HCCY0004 | Yellow Stripe 800g | 10 |
| HCCB0001 | Blue Stripe 800g | 10 |
| HCCG0002 | Green Stripe 800g | 10 |
| CCR00002 | Bleached 800g | Each |

Refuse Sacks

Compostable

Waste disposal needs to involve as little excess wastage and environmental impact as possible and these compostable waste sacks help to achieve this. Rather than containing the waste for a prolonged period and failing to decompose efficiently, like general refuse sacks, this alternative is compostable and therefore reduces environmental damage and carbon footprint.



| STOCK CODE | DESCRIPTION | QTY |
|------------|-----------------|-----|
| HFWS0002 | 12Ltr (16x18") | 480 |
| HFWS0003 | 35Ltr (28x22") | 300 |
| HFWS0004 | 70Ltr (29x33") | 200 |
| HFWS0009 | 80Ltr (30x41") | 240 |
| HFWS0010 | 240Ltr (44x55") | 100 |

Signage

Wet Floor Sign

100% recycled durable moulded polypropylene safety warning sign. Printing using a unique in-mould print injection, which ensures high resolution images. The lowest cost, fit for purpose safety sign on the market.



| SUPPLIER CODE | DESCRIPTION | QTY |
|---------------|-------------|------|
| S0340000 | Safeguard-R | Each |

Urinal Hygiene

Slant6 Urine Screen

The Slant6 from P-Wave has a lower plastic content than any other "highly fragranced" urinal screen and whilst the product is 100% recyclable, it also contains the Ecopure™ additive for faster biodegradation should it find its way to landfill. Hundreds of "splash-eliminating" slant bristles ensure walls, floors and trousers are kept dry. While its "anyway-up" design ensures correct installation every time and is even compatible with waterless urinals. As with previous versions of this product, billions of beneficial bacteria help to deodorise the drain below the surface, and keep working for its 30 day life.

| STOCK CODE | DESCRIPTION | QTY |
|------------|---------------------|-----|
| CUSP0011 | Honeysuckle (Clear) | 10 |
| CUSP0012 | Ocean Mist (Teal) | 10 |
| CUSP0010 | Mango (Orange) | 10 |
| CUSP0013 | Spiced Apple (Red) | 10 |



Black Is The New Green



TC20-R3 Recycled Bucket & Wringer

Features & Benefits:

- 90% reduction in virgin plastic usage over its lifetime.
- Every TC20-R3 sale prevents 11kg of virgin plastic entering the manufacturing process.
- Black plastic areas are constructed from around 70% recycled plastic.
- 25% less virgin plastic in initial production.
- One TC20 bucket has the equivalent lifespan of 6 conventional buckets.

| SUPPLIER CODE | DESCRIPTION | QTY |
|---------------|-------------|------|
| S0332291 | Red | Each |
| S0332292 | Blue | Each |
| S0332293 | Green | Each |
| S0332294 | Yellow | Each |

LTS-R Recycled Bucket & Wringer

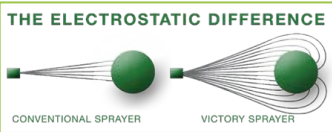
Features & Benefits:

- Vase shaped bucket reduces water usage by 30% saving over 2,000 litres of water every year.
- 6 year average lifespan.
- Black plastic areas are constructed from around 70% recycled plastic.
- One LTS-R bucket has the equivalent lifespan of 6 conventional buckets.

| SUPPLIER CODE | DESCRIPTION | QTY |
|---------------|-------------|------|
| S0327291 | Red | Each |
| S0327292 | Blue | Each |
| S0327293 | Green | Each |
| S0327294 | Yellow | Each |

Electrostatic Cleaning

Electrostatics is the process of adding an electrical charge to liquid droplets when they are sprayed. When you spray a solution that is properly charged with electrostatics the solution will envelop the targeted object to provide an even 360° coating, adhering to hidden and shadowed areas, with no runs or drips on vertical surfaces, delivering rapid and effective disinfection to all surfaces and areas.



The Fastest, Most Versatile & Easiest To Use
Cordless Disinfectant System



Power: 3400 mAh Lithium Ion Battery (4 hour spray time / 1 hour charge time)
Micron Size: 40/80/110
Flow Rate: 82/106/325ml/min
Weight: 1.7kg (inc. battery)

| STOCK CODE | DESCRIPTION | QTY |
|------------|---------------------------------|------|
| CEHS0001 | Electrostatic Hand Held Sprayer | Each |

Greater Volume Disinfectant System,
Ideal For Covering A Large Area



Power: 3400 mAh Lithium Ion Battery (4 hour spray time / 1 hour charge time)
Micron Size: 40/80/110
Flow Rate: 106/127/370 ml/min
Weight: 5.5kg (inc. battery)

| STOCK CODE | DESCRIPTION | QTY |
|------------|--------------------------------|------|
| CEBS0001 | Electrostatic Backpack Sprayer | Each |



Did you know?

Alliance were nominated for Scotland Excel's annual Supplier Excellence Award under the category of product innovation, after introducing the Electrostatic Cleaning System in 2019. Since its introduction it has been used to combat norovirus outbreaks in schools and colleges across the country with resounding success.



ULTRA High Level Disinfectant

ULTRA kills C Diff in under 2 minutes and offers up to 48 hours antimicrobial activity (it carries on working as a persistent solution). It is fragrance free, chlorine free, and degrades/decomposes into safe by-products after use (water and oxygen).

Use to treat and sanitise an area.

| STOCK CODE | DESCRIPTION | QTY |
|------------|-------------|-----|
| CEUC0001 | 5Ltr | 2 |

CONTROL High Level Disinfectant

CONTROL has been formulated to clean and disinfect using only 0.08% of chemical, and offers high levels of antimicrobial activity. Fragrance free, chlorine free, alcohol free and with prolonged antimicrobial effect. Control carries on working in the air and as a persistent solution in your environment as it passes over removing harmful VOCs.

Use weekly to maintain sanitation.

| STOCK CODE | DESCRIPTION | QTY |
|------------|-------------|-----|
| CECC0004 | 1Ltr | 6 |

DAILY High Level Disinfectant

DAILY uses the same adjuvant as in Control and Ultra and must be used as a chlorine tablet and bleach alternative.

Recommended for use in washing clothes and every day as part of your cleaning routine. Daily will set up and maintain the perfect surface for Control to be applied, Daily has no kill claims and requires no ppe and is safe for the user. A revolutionary high-level cleaner for all businesses and industries with no environmental impact.

Use daily to maintain sanitation.

| STOCK CODE | DESCRIPTION | QTY |
|------------|-------------|-----|
| CEDD0003 | 1Ltr | 6 |

Alcohol-Free Hand Sanitiser

PROTECT is water based, alcohol-free and simultaneously sanitises and moisturises the skin. It is non-flammable, cost effective and easy to use. It has excellent levels of user acceptance and prolonged anti-microbial effect for up to 2-4 hours after application. It protects and enhances your own hands' self defence system unlike alcohol which strips it away and leaves it unprotected. It conforms to EN 1500 and is an antiseptic so can be applied to cuts and grazes.

| STOCK CODE | DESCRIPTION | QTY |
|------------|-------------|------|
| CEPS0050 | 50ml | Each |
| CEPS0001 | 5Ltr | 2 |

Contact your local Alliance to arrange a demonstration of the Electrostatic Cleaning System.

Non-Chemical Cleaning

Toucan Eco III Active

Toucan Eco bio-cleaning system is a revolutionary way to produce a multipurpose disinfecting cleaner on-site, which replaces 80% of chemical cleaners and puts an end to the single-use plastic bottles they are supplied in.

The system requires only two ingredients – table salt and tap water – which are electrochemically activated by applying a small electrical current using a specialised electrolysis cell. This produces hypochlorous acid, an effective disinfectant, and sodium hypochlorite which is a gentle cleaning agent.

It can be used on hard surfaces and fabrics, and sprayed, wiped and mopped just like your normal cleaning regime. The main difference is that once you've run out you simply make some more. The solution is 99.99% effective against all forms of microorganisms with a very fast contact time and virtually no regrowth. And, as the cleaning disinfectant is non-toxic and non-hazardous, it's a safe and effective way to clean, offering a truly viable option for sustainable cleaning, and a less harmful product for end users.

It's great for busy environments which demand a quick, effective cleaning regime and saves money on chemical products. The Toucan Eco system is available in a range of unit sizes to suit small, medium or large facilities and can be tailored to the specific requirements of any site.



| SUPPLIER CODE | DESCRIPTION | QTY |
|---------------|------------------------|------|
| 104004 | Toucan Eco III 1Ltr | Each |



| SUPPLIER CODE | DESCRIPTION | QTY |
|---------------|----------------------------|------|
| 100520 | Toucan Eco Active 10Ltr | Each |



| SUPPLIER CODE | DESCRIPTION | QTY |
|---------------|---------------------------------|------|
| 100521 | Toucan Eco Active Plus 25Ltr | Each |

BioCeptor Biological Drain Maintenance System

GreasePak's unique formula makes it the most powerful product on the market. Easy to install and maintain, GreasePak is a biological drain maintenance system designed to work with GreasePak MSGD5 fluid, a highly concentrated active bio-enzymatic fluid specially formulated to degrade (FOG's) fats, oils and greases found in commercial kitchen drains.

GreasePak is cost effective and can be used either with a grease trap or as a stand-alone drain maintenance system to help food service operators to meet regulations and maintain clear, free-flowing drains.



| STOCK CODE | DESCRIPTION | QTY |
|------------|-----------------------|------|
| WGPK0001 | Drain System | Each |
| CMDD0005 | Multi Drain Degreaser | Each |

InnuScience Biotechnological Cleaning

InnuScience has established itself as a key leader in biotechnology based cleaning products. Ultimate biodegradability of over 90% in 14 days and 99% over 28 days.

Nu-Cycle 1 Dishwash Detergent

Nu-Cycle 1 is super concentrated, fast acting and dramatically reduces the need for descaling or additional cleaning, particularly in hard water areas.



| STOCK CODE | DESCRIPTION | QTY |
|------------|-------------|------|
| CINN0001 | 5Ltr | Each |

Nu-Kleen Multi Purpose Washroom Cleaner

Versatile multi purpose cleaner for everything from glass, and stainless steel to walls and floors. Compatible with Ecostatics.



| STOCK CODE | DESCRIPTION | QTY |
|------------|-------------|------|
| CINN0017 | 5Ltr | Each |

Nu-Cycle 3 Dish & Glass Rinse Aid

Fast acting drying agent that utilises the super concentrates of soft chemistry and biotechnology, allowing Nu-Cycle 3 to be dosed as little as 1ml per wash.



| STOCK CODE | DESCRIPTION | QTY |
|------------|-------------|------|
| CINN0002 | 5Ltr | Each |

Nu-Grip Plus Kitchen Floor Cleaner

This floor cleaner leaves a bio-film that continues to biodegrade fat, controls odours and eliminates the build up of grease, all while preventing the clogging of drains and leaving floors slip resistant.



| STOCK CODE | DESCRIPTION | QTY |
|------------|-------------|------|
| CINN0048 | 5Ltr | Each |

Nu-Cycle 7 Washing Up Detergent

Fragrance and dye free concentrated detergent specially designed to clean heavily soiled pots and pans.



| STOCK CODE | DESCRIPTION | QTY |
|------------|-------------|------|
| CINN0033 | 5Ltr | Each |

Nu-Bioscrub Sani & Toilet Cleaner

Multi purpose acid free sani cleaner and limescale remover is incredibly effective in showers and around taps, without damaging your chrome finishes. 5 minute contact to descale toilets.



| STOCK CODE | DESCRIPTION | QTY |
|------------|-------------|------|
| CINN0011 | 5Ltr | Each |

Nu-Fuzion Eco Degreaser

Heavy duty degreaser will remove scuffs, stains and light graffiti. The problem solver.



| STOCK CODE | DESCRIPTION | QTY |
|------------|-------------|------|
| CINN0014 | 5Ltr | Each |

Nu-Karpet Kare Concentrate Cleaner & Stain Remover

Nu-Karpet Kare is an all-in-one spotter or stain remover, carpet and fabric cleaner. It leaves an active bacterial flora that continues to biodegrade dirt and organic matters.



| STOCK CODE | DESCRIPTION | QTY |
|------------|-------------|------|
| CINN0015 | 5Ltr | Each |

Did you know?

InnuScience uses bacteria which are nature's cleaners. These enable their products to efficiently and effectively clean whilst digesting any organic matter. The bacteria provide the residual cleaning action, but the initial clean is mainly done by fermentation extracts, enzymes and green surfactants. Fermentation extracts are produced by bacteria and added into their products to provide immediate cleaning action.

ChemEco

ChemEco products have been specifically created to be fundamentally green, giving clients in the HORECA market (hotels, restaurants, cafes) the ability to choose green products that perform to high standards. Providing the best of both worlds in a challenging cleaning environment.

Washing Up Liquid



CECO0003
5Ltr
1x2

Surface Sanitiser



CECO0004
5Ltr
1x2

Heavy Duty Floor Cleaner



CECO0005
5Ltr
1x2

Foaming Oven & Grill Cleaner



CECO0008
5Ltr
1x2

Stainless Steel Cleaner Powder



CECO0030
1kg
1x4

Drain Maintainer



CECO0025
5Ltr
1x2

Hygienic Foam Soap



CECO0010
5Ltr
1x2

Alcohol Hand Rub



CECO0038
500ml
1x6

Glass Cleaner



CECO0031
750ml
1x6

Mould & Mildew Remover



CECO0032
750ml
1x6

Bio Odour Stopper



CECO0035
750ml
1x6

Wood & Leather Polish



CECO0019
750ml
1x6



Did you know?

ChemEco products use biotechnology that come from renewable and sustainable sources, have no environmentally hazardous profile, no damage to aquatic life, have no toxicity risk and are fully biodegradable.



Nil aqua
Sanitisers & Surface Cleaners

A range of fast acting and powerful germ killers that are effective in 30 seconds yet kind to the individual and environment. Made in the UK with 100% renewable energy and recycled plastic. Using the latest Advanced Barrier Technology, Nil aqua surface cleaners not only rapidly kills bacteria and viruses, but also leave a residual barrier on surfaces that continues to work for up to 30 days after the initial application. Hand sanitisers are effective for up to 6 hours, even after drying, on the skin. All products have been tested food safe whilst also meeting EN 14476 standards and are hospital safe. They are cruelty free, vegan and halal compliant.

Hand Sanitiser Foamer Bottles



| SUPPLIER CODE | DESCRIPTION | QTY |
|---------------|---------------|-----|
| NSP55 | 55ml | 24 |
| NSP100 | 100ml (Spray) | 50 |
| NSP200 | 200ml | 20 |
| NSP500 | 500ml | 12 |

Sanitiser Dispenser & Refills



| SUPPLIER CODE | DESCRIPTION | QTY |
|---------------|----------------------------------|-----|
| NSP1L | 1Ltr | 12 |
| NSP5L | 5Ltr | 4 |
| NS-HOD/RC | Dispenser & Refillable Cartridge | 12 |

Surface Spray & Wipes



| SUPPLIER CODE | DESCRIPTION | QTY |
|---------------|---------------------------|-----|
| NHSS500 | 500ml Surface Spray | 12 |
| NHSS5L | 5Ltr Surface Spray Refill | 4 |
| NCW-H200 | 200 Wipes | 12 |

Sanitiser Fragrance Collection

A selection of hand sanitisers and surface cleaners infused with delightful fragrance oils. Wild Cherry and Cotswold Meadow are certified allergen free. Also available in Pomegranate and Passionfruit, and Apple and Jasmine.



| SUPPLIER CODE | DESCRIPTION | QTY |
|---------------|-------------|-----|
| NS-OH55 | 55ml | 24 |
| NS-OH100 | 100ml | 50 |
| NS-OH500 | 500ml | 12 |
| NS-OH5L | 5Ltr | 4 |

Wild Cherry



| SUPPLIER CODE | DESCRIPTION | QTY |
|---------------|-------------|-----|
| NS-WC55 | 55ml | 24 |
| NS-WC100 | 100ml | 50 |
| NS-WC500 | 500ml | 12 |
| NS-WC5L | 5Ltr | 4 |

Fresh Watermelon



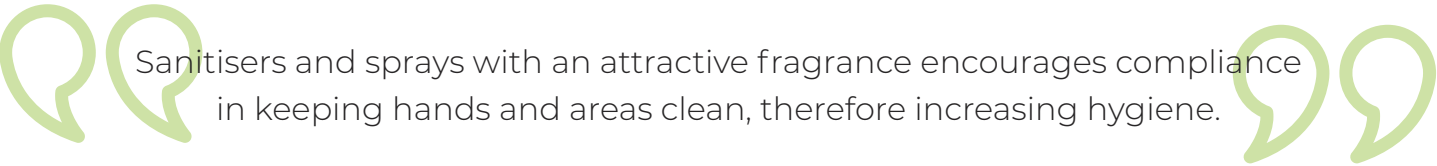
| SUPPLIER CODE | DESCRIPTION | QTY |
|---------------|-------------|-----|
| NS-FW55 | 55ml | 24 |
| NS-FW100 | 100ml | 50 |
| NS-FW500 | 500ml | 12 |
| NS-FW5L | 5Ltr | 4 |

Cotswold Meadow



| SUPPLIER CODE | DESCRIPTION | QTY |
|---------------|-------------|-----|
| NS-CM55 | 55ml | 24 |
| NS-CM100 | 100ml | 50 |
| NS-CM500 | 500ml | 12 |
| NS-CM5L | 5Ltr | 4 |

Contact your local Alliance for more information on the full range.



SURE

100% Plant-Based Cleaning Products

SURE® is a comprehensive offering of plant-based, 100% biodegradable* cleaning products designed to deliver superior professional results while being safe for people and kind to the environment. With environmentally friendly ingredients from renewable resources, SURE products meet all your daily requirements for kitchens, facilities and personal care.

*Based on an independent OECD 301B assessment.

Cleaner & Degreaser



| STOCK CODE | DESCRIPTION | QTY |
|------------|-------------|------|
| CDSUR014 | 5Ltr | Each |
| CDSUR013 | 1Ltr | Each |

Grill Cleaner



| STOCK CODE | DESCRIPTION | QTY |
|------------|-------------|------|
| CDSUR020 | 5Ltr | Each |

Grill Cleaner/Degreaser



| STOCK CODE | DESCRIPTION | QTY |
|------------|---------------------|-----|
| CDSUR032 | 750ml (Bottle Only) | 6 |

Interior & Surface Cleaner



| STOCK CODE | DESCRIPTION | QTY |
|------------|-------------|------|
| CDSUR010 | 5Ltr | Each |
| CDSUR009 | 1Ltr | 6 |

Glass/Surface Cleaner



| STOCK CODE | DESCRIPTION | QTY |
|------------|---------------------|-----|
| CDSUR030 | 750ml (Bottle Only) | 6 |

Glass Cleaner



| STOCK CODE | DESCRIPTION | QTY |
|------------|-------------|------|
| CDSUR012 | 5Ltr | Each |
| CDSUR011 | 750ml | 6 |

Floor Cleaner



| STOCK CODE | DESCRIPTION | QTY |
|------------|-------------|------|
| CDSUR008 | 5Ltr | Each |
| CDSUR007 | 1Ltr | 6 |

Hand Dishwash



| STOCK CODE | DESCRIPTION | QTY |
|------------|-------------|------|
| CDSUR016 | 5Ltr | Each |
| CDSUR015 | 1Ltr | Each |

Toilet Cleaner



| STOCK CODE | DESCRIPTION | QTY |
|------------|-------------|------|
| CDSUR002 | 5Ltr | Each |
| CDSUR001 | 1Ltr | 6 |

Descaler



| STOCK CODE | DESCRIPTION | QTY |
|------------|-------------|------|
| CDSUR018 | 5Ltr | Each |
| CDSUR017 | 1Ltr | 6 |

Disinfectant & Descaler Spray



| STOCK CODE | DESCRIPTION | QTY |
|------------|-------------|------|
| CDSUR031 | 750ml | Each |

Cleaner Disinfectant



| STOCK CODE | DESCRIPTION | QTY |
|------------|-------------------|------|
| CDSUR024 | 5Ltr Ready To Use | Each |
| CDSUR022 | 5Ltr Concentrate | Each |
| CDSUR021 | 1Ltr | 6 |
| CDSUR023 | 750ml | 6 |

The SmartDose System features proprietary patent-pending technology

SmartDose products come in a convenient 1.4 litre bottle

Ergonomic handle

Easy to use system with simple icons

Shaped leak and drip resistant spout

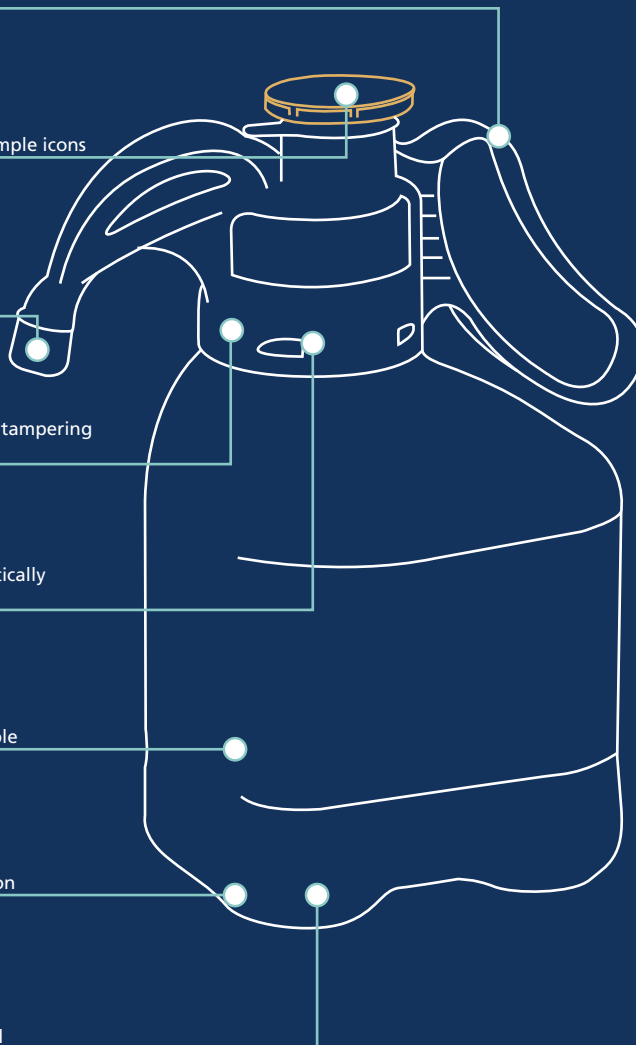
Captive system eliminates tampering and dangerous refilling

SmartDose pump automatically calculates two doses

Environmentally sustainable

Complete bottle evacuation

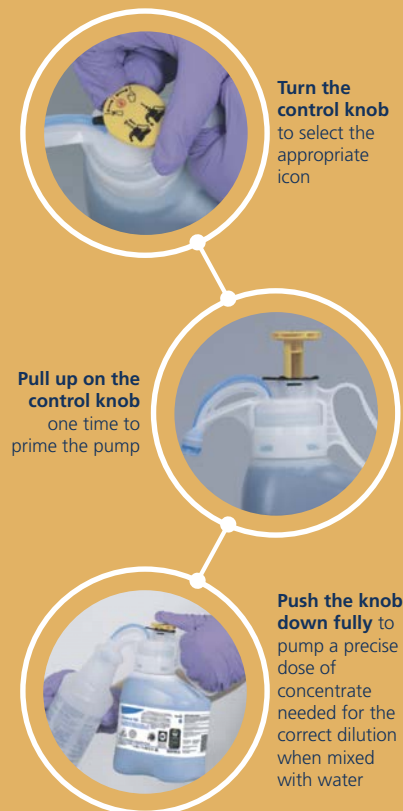
No water hook-up needed



Mixing concentrated cleaning products just got **Simpler, Safer, Smarter**

The patent-pending SmartDose bottle allows you to easily and accurately dose concentrated cleaning products. This innovative and sustainable solution delivers better cost control than any other dosing system.

It's so simple



SmartDose Cleaning System

SmartDose is a simple, maintenance free, portable dosing system without the need for any equipment installation, delivering an accurate dose of concentrated product simply, safely and swiftly via a patented smart pump and bottle design. It allows for 2 different shot sizes, making it suitable for bottle, bucket, machine and sink filling.

D10 Suma Bac Sanitiser



| STOCK CODE | DESCRIPTION | QTY |
|------------|-------------|------|
| CDC01001 | 1.4Ltr | Each |

D2.3 Suma Multi Purpose Cleaner



| STOCK CODE | DESCRIPTION | QTY |
|------------|-------------|------|
| CDC01000 | 1.4Ltr | Each |

Degragerm SD Surface Cleaner



| STOCK CODE | DESCRIPTION | QTY |
|------------|-------------|------|
| CDC01004 | 1.4Ltr | Each |

Sani 4 in 1 Plus Washroom Cleaner



| STOCK CODE | DESCRIPTION | QTY |
|------------|-------------|------|
| CDC01023 | 1.4Ltr | Each |

Sani Cid Pur-Eco SD Washroom Cleaner



| STOCK CODE | DESCRIPTION | QTY |
|------------|-------------|------|
| CDC01033 | 1.4Ltr | Each |

Jontec 300 Pur-Eco Neutral Floor Cleaner



| STOCK CODE | DESCRIPTION | QTY |
|------------|-------------|------|
| CDC01006 | 1.4Ltr | Each |

SmartDose Sprint 200 Pur-Eco Multi Purpose Cleaner



| STOCK CODE | DESCRIPTION | QTY |
|------------|-------------|------|
| CDC01027 | 1.4Ltr | Each |

SURE Cleaner Disinfectant



| STOCK CODE | DESCRIPTION | QTY |
|------------|-------------|------|
| CDSUR040 | 1.4Ltr | Each |

Sani Cid Refill Bottles



| STOCK CODE | DESCRIPTION | QTY |
|------------|-------------|-----|
| CDC00960 | 500ml | 5 |

Degragerm Refill Bottles



| STOCK CODE | DESCRIPTION | QTY |
|------------|-------------|-----|
| CDCB1008 | 500ml | 5 |

Sani 4 in 1 Refill Bottles



| STOCK CODE | DESCRIPTION | QTY |
|------------|-------------|-----|
| CDCB1011 | 500ml | 5 |

Refill Bottles for D2.3 & D10 Supplied with stickers for D2.3 & D10



| STOCK CODE | DESCRIPTION | QTY |
|------------|-------------|-----|
| CDC01002 | 750ml | 6 |

Environmental Cleaning Chemicals

Bio-D

Made in the UK, Bio-D offers a range of cleaning products suitable for everyone. Made using ethically sourced ingredients and with 100% recyclable packaging, Bio-D's products are some of the most sustainable and environmentally friendly cleaning solutions on the market. All products are vegan and cruelty free with no exceptions.

Sanitising Hand Wash

Neutralises 99.9% of harmful bacteria including E.coli, Salmonella and MRSA and is also 100% hypoallergenic making it perfect for delicate skin. Its lime and aloe vera scent is refreshingly fruity without being overpowering.



| STOCK CODE | DESCRIPTION | QTY |
|------------|-------------|-----|
| CTN00011 | 500ml | 6 |
| CTN00012 | 5Ltr | 4 |

Bathroom Cleaner

Bathrooms can be a pain to clean but this versatile bathroom cleaner works brilliantly on limescale and watermarks. Being suitable for glass, ceramics, perspex, chrome and non-porous surfaces makes this the ideal cleaner.



| STOCK CODE | DESCRIPTION | QTY |
|------------|-------------|-----|
| CTN00007 | 500ml | 12 |
| CTN00008 | 5Ltr | 4 |

Toilet Cleaner

Being fantastic at removing limescale, this toilet cleaner is one of the best on the market. With a refreshing lemongrass scent this cleaner is hypoallergenic and also free from petrochemicals, phosphates, preservatives, enzymes and synthetic perfumes.



| STOCK CODE | DESCRIPTION | QTY |
|------------|-------------|-----|
| CTN00009 | 750ml | 12 |
| CTN00010 | 5Ltr | 4 |

Dishwasher Rinse Aid

For a cost effective rinse aid option, Bio-D's high-performance solution is perfect. Suitable for all dishwashing machines, it ensures tableware comes out gleaming and looking absolutely spotless each time.



| STOCK CODE | DESCRIPTION | QTY |
|------------|-------------|-----|
| CTN00013 | 750ml | 12 |

All Purpose Sanitiser

Utilising orange oil to act as a degreaser and lactic acid to neutralise 99.9% of harmful bacteria including E.coli, Salmonella and MRSA. It also conforms to the food grade standard BS EN 1276 and is a non-irritant all rounder which is gentle on skin.



| STOCK CODE | DESCRIPTION | QTY |
|------------|-------------|-----|
| CTN00003 | 500ml | 12 |
| CTN00004 | 5Ltr | 4 |

Multi Surface Sanitiser

Containing orange oil to aid in degreasing and loosening stubborn stains and dirt, this multi surface cleaner is perfect for sinks, baths, cookers, work surfaces, floors, tiles and more. Simply use neat on a cloth for heavy duty stubborn stains or add a cap full to water for larger areas. The sanitiser also conforms to food grade standard BS EN 1276.



| STOCK CODE | DESCRIPTION | QTY |
|------------|-------------|-----|
| CTN00005 | 750ml | 12 |
| CTN00006 | 5Ltr | 4 |

Washing Up Liquid

With its 100% hypoallergenic properties making it easy on gentle skin, this washing up liquid is ideal for tackling your dirty dishes and any stubborn stain you may encounter.



| STOCK CODE | DESCRIPTION | QTY |
|------------|-------------|-----|
| CTN00001 | 750ml | 12 |
| CTN00002 | 5Ltr | 4 |



Paper Hygiene

The Cheeky Panda

An exciting innovation in disposable hygiene, sustainable and environmentally friendly.

- 100% Bamboo - the world's fastest growing plant.
- 100% FSC certified - the UK's first and only tissue brand to offer 100% FSC certified Bamboo product.
- Unlike wood paper, bamboo fibres are longer and rounder creating smoother and stronger tissue.
- The Cheeky Panda bamboo toilet paper production contributes 31% less emissions than recycled paper and a huge 65.5% less than virgin pulp toilet tissue.
- 100% plastic free packaging.



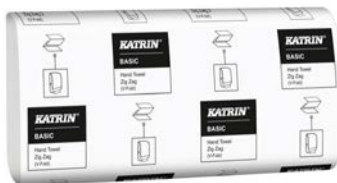
| STOCK CODE | DESCRIPTION | QTY |
|------------|---------------------------|-----|
| HCTT0001 | 3 Ply Bamboo Toilet Rolls | 45 |



| STOCK CODE | DESCRIPTION | QTY |
|------------|--------------------------|-----|
| HCFT0001 | 3 Ply Facial Tissue Box | 12 |
| HCFT0002 | 3 Ply Facial Tissue Cube | 12 |

Eco Hand Towels

Certified under the Nordic Swan Eco Label, these zig zag hand towels are made from 100% recycled fibre. The self presenting towels dispense one sheet at a time making them hygienic while helping to reduce consumption.



| STOCK CODE | DESCRIPTION | QTY |
|------------|--|--------|
| HBZZ0002 | Katrin Basic 1 Ply Zig Zag Hand Towels | 20x250 |

Ecoleaf

Ecoleaf toilet tissue is made from 100% recycled fibre sourced exclusively from the UK. It's produced from a mix of consumer and trade waste using chlorine-free processing. The tissue comes in 100% compostable wrap making the packaging sustainable, renewable, non-polluting and non-toxic.



| STOCK CODE | DESCRIPTION | QTY |
|------------|---|-----|
| SETT0001 | Recycled 2 Ply Toilet Tissue 240 Sheets | 45 |

Bamboo grows up to 1 metre a day and is the fastest growing plant on the planet.



1 acre of bamboo produces in 1 year what 1 acre of trees takes 30 years.

Bamboo toilet tissue takes 65% less carbon to make than regular tissue.



Saving 1 ton per 1000 people per month.

Bamboo is 100% natural, skin friendly and uses no fertilisers to grow it or harsh chemicals in the manufacturing process.



Bamboo Tissue - Low Carbon and Sustainable

Refrigeration

Cabinet Fridges & Freezers

Foster refrigeration have over 40 years of experience and are renowned as one of UK's leading manufacturers. The Foster EcoPro G2 range has been cleverly designed to be reliable and energy efficient utilising the best materials.

- Provides an alternative format for high ambients as it takes cooler air from floor level.
- Thicker and more robust cabinet design with advanced thermal efficiency.
- Fluid-Fresh Dynamic, a new and improved advanced Foster Circular II air distribution system maximising efficient operation, even when shelves are fully loaded.



| STOCK CODE | DESCRIPTION | DIMENSIONS | CAPACITY |
|------------|-----------------------------|-------------------------------|----------|
| WREP0700 | Single Door Fridge EP700H | 700mm W x 820mm D x 2080mm H | 600Ltr |
| WREP0702 | Single Door Freezer EP700L | 700mm W x 820mm D x 2080mm H | 600Ltr |
| WREP1440 | Double Door Fridge EP1440H | 1440mm W x 820mm D x 2080mm H | 1350Ltr |
| WREP1442 | Double Door Freezer EP1440L | 1440mm W x 820mm D x 2080mm H | 1350Ltr |

Undercounter Fridges & Freezers

Where space is minimal, undercounter fridges and freezers are a convenient alternative to cabinet appliances. They use a small footprint and will fit under most workbenches and surfaces. While they can look quite petite, you might be surprised by how much space they actually provide.



| STOCK CODE | DESCRIPTION | DIMENSIONS | CAPACITY |
|------------|------------------------------------|-----------------------------|----------|
| WRCA0135 | Williams Amber Undercounter Fridge | 606mm W x 577mm D x 805mm H | 135Ltr |
| WRHR0120 | Foster Undercounter Freezer | 440mm W x 745mm D x 895mm H | 120Ltr |
| WRHR0150 | Foster Undercounter Fridge | 605mm W x 640mm D x 830mm H | 150Ltr |
| WRHR0151 | Foster Undercounter Drawer Fridge | 605mm W x 640mm D x 830mm H | 150Ltr |

Fridges and freezers have a lower average power rating, compared to other kitchen appliances. Choosing one with a good energy rating could save you money.

Chef Draw Freezer

- Removable refrigeration system designed for easy on-site service and maintenance.
- Environmental friendly R290 natural refrigerant has a low GWP / zero ODP.
- Magnetic balloon door gaskets with 100% tight seal.
- Designed and engineered to operate efficiently up to a 43°C ambient.
- Temperature: -18/-22°C.



| STOCK CODE | DESCRIPTION | QTY |
|------------|---------------------------------------|------|
| WRHCD001 | Williams Chef Drawer Freezer 2x 1/1GN | Each |

Water Boilers

- Energy efficient water boilers with a compact footprint.
- Made with 95% recyclable materials.
- 28 litres per hour.
- Plumbed into water supply.



| STOCK CODE | DESCRIPTION | RAPID DRAW |
|------------|---------------|------------|
| WIWB0660 | Marco ECO T5 | 5Ltr |
| WIWB0661 | Marco ECO T10 | 10Ltr |
| WIWB0662 | Marco ECO T20 | 20Ltr |

Cooking Equipment

Table Top Induction Cooker

Features two cooking zones, front and back. The high efficiency delivers almost twice the cooking power of a similarly rated gas hob. The functional and attractive profile makes this perfect for front of house theatre style cooking. It boasts a 6mm thick, high impact 'Schott Ceran' glass ceramic surface.



| STOCK CODE | DESCRIPTION | QTY |
|------------|--------------------------|------|
| WRIH0021 | Lincat Tandem Style IH21 | Each |

Dominator Induction Range

The Falcon Dominator 'Plus' Induction delivers not only energy savings but also practical and operational benefits making these the ultimate in cooking appliances.



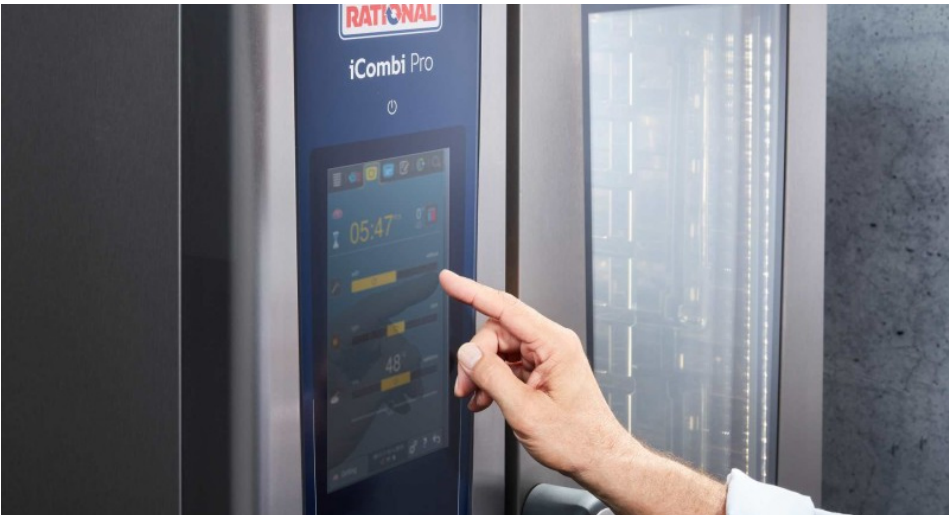
| STOCK CODE | DESCRIPTION | DIMENSIONS |
|------------|-------------|-----------------------------|
| WRIH3913 | E3913i | 900mm W x 770mm D x 890mm H |

Opus 800 Induction Range

Double insulated to maximise efficiency and reduce heat loss. Automatic pan detection ensures rings are not being heated while nothing is cooking.



| STOCK CODE | DESCRIPTION | DIMENSIONS |
|------------|-------------|-----------------------------|
| WLOE8017 | 4 Zone | 900mm W x 800mm D x 900mm H |



iCombi Pro Electric Combination Ovens

The Rational Combi Pro delivers consistent and uniform results with 50% more productivity and 10% shorter cooking times, versus the previous Rational model. The iCooking suite continuously checks the condition of the food against the desired result by calculating the cooking progress and intuitively adjusting the temperature. An innovative assistant can schedule multiple cooking items, managing the process with exacting results. They also feature an iCare system that manages the cleaning controls intelligently, featuring a 'short' interim cycle wash to keep the oven in a hygienic and pristine condition.



| STOCK CODE | DESCRIPTION | DIMENSIONS |
|------------|-------------|-----------------------------|
| WICP0611 | 6 Grid | 850mm W x 804mm D x 842mm H |



| STOCK CODE | DESCRIPTION | DIMENSIONS |
|------------|-------------|------------------------------|
| WICP1011 | 10 Grid | 850mm W x 840mm D x 1014mm H |

Contact your local Alliance

for more information on the full range.

Warewashing

Pass Through Warewashing

The Winterhalter PT-M Pass Through warewasher with its 500x500mm rack size offers enough space for most types of dishes. Depending on the application, the compact machine model is available as a dishwasher, bistro dishwasher, glasswasher or cutlery washer. The elliptical wash fields, VarioPower washing pressure adjustment and the innovative full-flow filtration guarantee perfect cleaning results. The active Energy Management shortens the heating and wash cycles and the standard EnergyLight heat recovery system saves valuable energy with every wash cycle, thereby reducing your operating costs.



| STOCK CODE | DESCRIPTION | DIMENSIONS | QTY |
|------------|--------------------------------------|------------------------------|------|
| WPTM0001 | Medium | 635mm W x 750mm D x 1515mm H | Each |
| WPTM0002 | Medium Energy Plus | 635mm W x 750mm D x 2195mm H | Each |
| WPTM0003 | Large | 735mm W x 750mm D x 1515mm H | Each |
| WPTM3001 | Medium Energy with Integral Softener | 635mm W x 750mm D x 1515mm H | Each |

Under Counter Warewashing

Winterhalter's range of undercounter warewashing machines offer the ultimate in technology and styling whilst retaining their commitment to quality cleaning results. The machines come in small, medium, large or extra large sizes and they can be configured as glass, dish, bistro or cutlery washers.

- Colour coded progress display and touch screen.
- Multiple programmes for different levels of cleaning as well ECO and silent modes.
- Non-pressurised boiler.
- Rinsing temperature ensured by thermo stop boiler.
- Elliptical wash fields, top and bottom.
- Integrated detergent and rinse aid dosing device.



| STOCK CODE | DESCRIPTION | DIMENSIONS | RACK SIZE |
|------------|-------------------------------|-----------------------------|-----------|
| WWUC0001 | Small Under Counter | 460mm W x 603mm D x 760mm H | 400mm |
| WWUC0002 | Medium Under Counter | 600mm W x 603mm D x 760mm H | 500mm |
| WWUC0003 | Large Under Counter | 600mm W x 603mm D x 855mm H | 500mm |
| WWUC0004 | Extra Large Under Counter | 600mm W x 637mm D x 855mm H | 500mm |
| WWUC0025 | Medium with Internal Softener | 600mm W x 603mm D x 760mm H | 500mm |
| WWUC0023 | Medium, Energy Model | 600mm W x 603mm D x 760mm H | 500mm |
| WWUC0024 | Medium, Excellence-iPlus | 600mm W x 603mm D x 855mm H | 500mm |



Catering Appliance Accessories

FriPura Fryer Oil Management

The big problem with cooking oil is that it only lasts a few days and when it's finished, you need to change it. Make the change too soon and you throw away good oil, wait too long and your food quality suffers, which costs money and wastes time. FriPura has been created to solve this problem – the unique, patented design saves money and doubles the life of your oil.

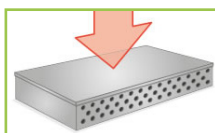
- 50% reduction of fryer oil.
- 50% saving on oil costs.
- 23% calorie reduction in food.
- 80% reduction in fatty acids.
- 11% acrylamides reduction.
- Saves time – less oil refills.
- Oil quality lasts longer.
- Improves food taste & texture.
- Environmentally friendly.
- Easy-to-use – watch the video online.



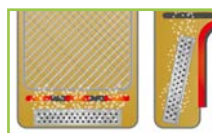
Remove the FriPura tablet from the protective pouch



Place the FriPura tablet in the metal case



Slide the lid to seal the FriPura tablet in the case



Place the case at the bottom of the fryer and fill with oil

How many FriPura will I need?

| Fryer Size | FriPura Required |
|--------------|------------------|
| Up to 16Ltrs | 1 FriPura |
| 17 – 30Ltrs | 2 FriPura |
| 31 – 45Ltrs | 3 FriPura |
| 46 – 60Ltrs | 4 FriPura |

Double the life of your oil and half the cost with FriPura tablets

| STOCK CODE | DESCRIPTION | QTY |
|------------|--------------------------------|------|
| WFR10001 | FriPura Tablet 14.5x9.5x1cm | 18 |
| LTMB0001 | Metal FriPura Tablet Container | Each |

Your Questions Answered

Q: How does FriPura work?

A: FriPura reacts with products in the oil which speed up degradation. Without FriPura, once oil starts to break down it quickly deteriorates.

Q: Is FriPura proven to be safe and non-toxic?

A: Yes, FriPura has been extensively tested in the lab and real-world situations and has been independently tested and approved by Bibra Toxicology Advice & Consulting and Campden BRI.

Q: How long will my oil last and how much will I save?

A: As a guideline, the life of your oil will at least double using FriPura. Typically, you'll save around half of your current oil cost.

Q: How do I dispose of the used FriPura Tablet?

A: Just throw it in your general waste.

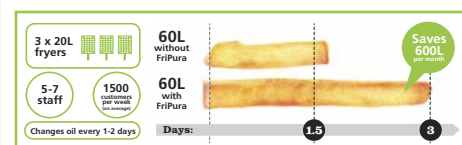
Q: How do I know when my oil is spent?

A: The best way to check the degradation of your oil is with Total Polar Meters or Free Fatty Acid litmus papers.

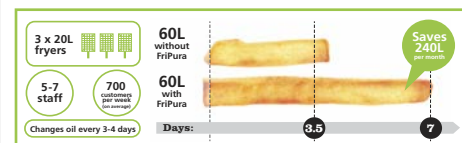
Alternatively, you can check the look and smell of the oil, along with the appearance and quality of food coming out of the fryer. If your oil is old, your food will exhibit uneven browning. With FriPura, even if the oil looks dark the food will still be a nice even colour.

What Oil Savings Will I Make?

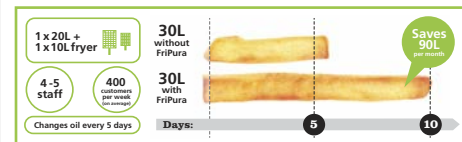
How does FriPura work in a high volume site?



How does FriPura work in a national chain gastropub?



How does FriPura work in a family pub or restaurant?



There are a number of notable avenues that a product can take when reaching the end of its life. Understanding each of these avenues and what products will fit them, is key to reducing and possibly eliminating your company's negative environmental impact.

Recyclable is often used as a blanket term but unknown to many, it has a number of limitations when it comes to what can and can't be processed at recycling facilities. Recycling is the process of converting waste into a reusable material. Many materials can be recycled, including metal, paper and cardboard, glass and plastics.

Products made from recyclables which re-enter the production cycle use less energy than refining raw materials. Recycling also results in less waste going to landfill.



Sending items to landfill is generally the most expensive way to dispose of waste. By comparison, recycling and reusing end of life materials will reduce both the environmental impact along with additional waste and disposal costs. For products to be recycled they must be clean and free from any food waste. One dirty container could be enough to contaminate the recycling stream, resulting in all items going to landfill.

Alliance have partnered with a number of suppliers that offer a "closed loop system" for the disposal of recyclables and compostables. Vegware, Harfield and Plastico all offer collection and disposal services for their products and further information regarding these services can be obtained from your Alliance representative.



The most effective way to process recycling prior to sending to a waste management facility is to correctly sort and separate all recyclables. The best method of doing this is to have a separate bin for each material you are recycling, clearly labelled so all staff know what material belongs in which receptacle.

The nature of reusable products means that the waste from single-use alternatives is avoided. Although there is no arguing that recycling is beneficial to the environment rather than sending items to landfill, it can still carry a negative impact.

The collection and reintroduction of recycled materials into the manufacturing process still requires additional energy, with 35.8%* provided by a renewable source.

*Department for Business, Energy & Industrial Strategy, Statistical Press Release, UK Energy Statistic, Q1 2019



Biodegradable

Biodegrading is the naturally occurring breakdown of materials, either by microorganisms such as bacteria and fungi, or through other biological activity. A product that is able to break down naturally due to this process is not inherently eco-friendly. An example of this being most plastics, which over time will break down, resulting in the creation of micro plastics, which impact the ecological balance on a microscopic scale infiltrating the food chain water cycle. An alternative is bioplastics, which is plant biomass such as corn starch, sugar and wheat. These should fully break down naturally and in some instances be compostable.

Did you know?

The three key factors that lend themselves to biodegradation are light, heat and oxygen. Waste is effectively mummified with a total lack of light and oxygen.

Compostable

A product that is "compostable" is one that can be placed into a composition of decaying biodegradable materials, and eventually turns into a nutrient rich material. That means there's no need for sorting, and compostable cups, lids, burger boxes and napkins can all go together without removing any food and drink contaminants.

Composting is a specific process which does not occur in landfills. Microorganisms, carbon, water, oxygen and nitrogen are all essential parts of the compost process. Compostable products are placed in an open landfill or dump where oxygen is available, they will decompose at a rate similar to other biodegradable materials in the same setting.

Because composting requires a balance of bacteria, microorganisms and other specific conditions, industry standards must be adhered to.

A commercial compost facility optimises the process to ensure rapid biodegradation of organic material. There are many types of commercial composts, all optimise each step of the decomposition process, by controlling conditions such as shredding material to the same size or controlling the temperature and oxygen levels. This ensures a rapid biodegradation of the organic material to a high quality, toxic-free compost.

Home composts produce the same quality compost at the end of the process but they may not maintain the ideal conditions required for composting certain products such as PLA bioplastic products which require sustained temperatures of 55°C for 10 days to break the molecular bonds. Home composts aren't good for meat, fish or dairy either as they will smell and/or attract vermin. The most common industry standards used to denote compostability for packaging and disposable products are the European EN 13432 and the American ASTM D6400 standards.

Did you know?

Products that carry the marking of standard EN 13432 with the seedling logo can also be disposed of in your garden and food waste bin. These are made from corn starch and break down at a similar rate as other food and organic matter.

What's The Difference Between Compostable & Biodegradable?

Biodegradation is a natural process with no human intervention. Composting is a human controlled process which ensures that optimal conditions for microbes are met in order to reach the result faster. All compostable material is biodegradable, the difference in categorisation is time. For something to be compostable, it must break down within 12 weeks.

What's the Difference?

Biodegradable



Breaks down into smaller sized pieces

Requires heat, water, oxygen and micro organisms but may never fully break down



May take decades to disappear

Plastics biodegrade into smaller pieces of plastic over a longer period of time

Compostable



Breaks down into non-toxic components

Requires heat, water, oxygen and micro organisms to fully break down



Breaks down completely and does not harm plant growth

Bio based materials break down faster as long as the right conditions are met



Environmental Credentials

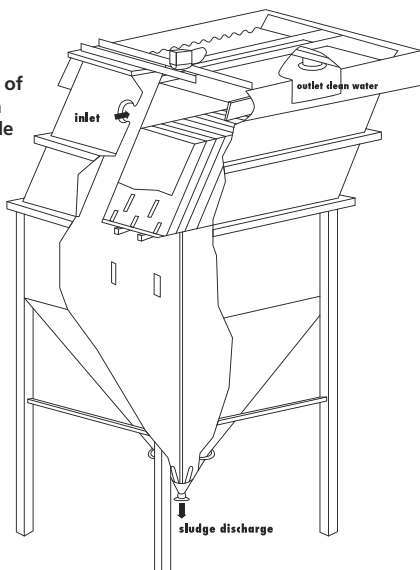
Steelite International work closely with a number of suppliers and organisations, and are continually monitoring, developing and improving procedures to create minimum impact on the community and environment, while ensuring maximum efficiency and cost savings for the future sustainability of the business.

Steelite International is a member of The Green Organisation that rewards and promotes environmental best practice around the world, and the Staffordshire Business & Environmental Network, which aims to help local businesses reduce environmental impacts while also generating profits.

They have a dedicated and innovative approach to caring for the environment. In 2007, the business became one of only five companies in the UK to install a Lamella system. Steelite is the only tableware manufacturer to use a Lamella system for recycling clay waste.

In addition to clay recycling, fewer chemicals are now required to separate waste. This has a positive effect on the environment and water discharged from the site is also purer.

The Lamella has significantly reduced Steelite International's impact on the environment. The company now recycles in excess of 90% of manufacturing waste. In 2010 they received a Green Apple Award for the Lamella project.



Since its installation in July 2007, the Lamella machine has recycled a staggering 350 metric tonnes of clay body per year.



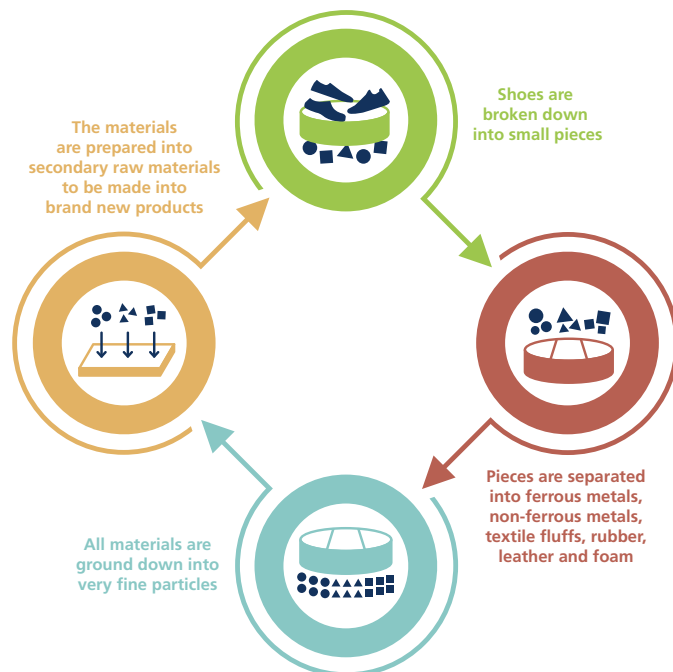
Footwear Sustainability Loop

Reducing Waste. Extending Life.

Over 300 million pairs of shoes are thrown out each year, in the UK, and can take at least 30 years to decompose in landfill. WearerTech have a scheme where you can return old shoes (doesn't have to be WearerTech) to them and they will be recycled.

Your shoes will be sorted at their warehouse and depending on their condition, they'll be put through the recycling process or if they happen to still be wearable, they'll be sent out to others in need across the world in Africa, Middle East and Asia.








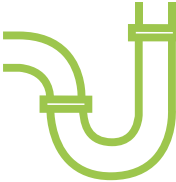













The list of things that your shoes become is constantly growing but judo mats, insulation and new flooring are a few examples.



Send your shoes to:
The Green Machine, WearerTech Ltd,
 Chapel Street, Bristol. BS2 0UL

Understanding Plastic Recycling Symbols

Plastic is a component of many consumer products, accounting for much of the manufacturing industry's output and final produce. Not all plastics are the same, however, and this means that not all of them can be disposed of and recycled in the same manner.

| | | | | | | |
|---|--|--|--|--|---|--|
|  <p>1 PETE</p> <p>Polyethylene Terephthalate</p> <p>Clear, tough plastic</p>  <p>Drinks bottles, plastic jars, prepared food trays</p>  <p>Widely recycled</p> |  <p>2 HDPE</p> <p>High Density Polyethylene</p> <p>Common white or coloured plastic</p>  <p>Milk containers, shampoo bottles, soap bottles, bleach bottles, detergent bottles</p>  <p>Widely recycled</p> |  <p>3 PVC</p> <p>Polyvinyl Chloride</p> <p>Hard, rigid plastic</p>  <p>Non-food bottles, pipes, outdoor furniture, blister packaging, window frames</p>  <p>Not commonly recycled</p> |  <p>4 LDPE</p> <p>Low-Density Polyethylene</p> <p>Soft, flexible plastic</p>  <p>Cling film, sandwich bags, plastic bags, squeezable bottles (i.e. hand cream), dry cleaning bags</p>  <p>Widely recycled</p> |  <p>5 PP</p> <p>Polypropylene</p> <p>Hard but flexible plastic</p>  <p>Yogurt pots, margarine containers, plastic bottle caps, ketchup bottles, plastic dishes</p>  <p>Widely recycled</p> |  <p>6 PS</p> <p>Polystyrene / Expanded Polystyrene</p> <p>Soft, flexible plastic</p>  <p>Plastic cutlery, packing foam, yogurt pots, foam takeaway packaging, meat trays</p>  <p>Not commonly recycled</p> |  <p>7 Other</p> <p>Miscellaneous Plastics</p> <p>All other plastics, including acrylic and nylon</p>  <p>Compact discs, water cooler bottles, baby bottles. Polycarbonate (which contains BPA), composite plastics (crisp wrappers)</p>  <p>Due to the mixed nature, it is not possible to categorise this group as recyclable. However, some plastics that fall under this may be.</p> |
|---|--|--|--|--|---|--|



Materials Guide

The industry we operate in is striving to introduce new products and new materials to market which help fight against the impact of disposables and single-use items in our environment. With such developments a new issue has surfaced... what exactly do all these new materials mean? How can they be used? We hope to simplify what all these materials are to help you decide what environmental alternatives may be best for you.



PLA

Polylactic Acid commonly shortened to PLA might sound like something you should stay away from, however PLA is a fantastic plant-based alternative to plastic (a bioplastic).

PLA is made from renewable resources such as waste sugar cane (once the sugar extracting process has happened), corn starch, cassava, or sugar beet, making PLA a natural polymer designed to be a fitting substitute for traditional petroleum-based plastics like PET (polyethylene terephthalate).

Because PLA is plant-based, this also means it can be fully composted alongside food waste at commercial composting facilities without the need to clean off any contamination.

CPLA

PLA has a low melting point, so is best for cold use up to around 40°C or 105°F. Where more heat resistance is needed such as in cutlery, or lids for coffee or soup, we use a crystallised form. This involves adding chalk to the PLA to act as a catalyst, and then rapidly heating and cooling the PLA resin during production. The result is a product which is heat stable to 90°C or 194°F, known as CPLA.

CPLA is totally compliant with all industrial composting regulations and will completely break down in either in-vessel or open windrow composting.



PET & rPET

PET is a very popular choice for food and drink packaging because of the material's strength, resistance to heat, chemicals and fatigue, making it a safe and hygienic solution for containing and transporting food and drink.

PET is a highly recyclable plastic, with 99% of the local authorities in the UK actively recycling it. This is a result of the material's versatility, as it can be recycled over and over again to make new products ranging from t-shirts, to backpacks or even back in to more food and drink packaging!

rPET stands for recycled PET. Using rPET saves large amounts of energy and greenhouse gas emissions when compared to virgin PET, which is a petroleum product. Recycling also helps prevent plastic from ending up in the environment where it can take hundreds of years to decompose naturally.

Bagasse

Bagasse is created from fibrous matter that is left over following the processing of sugar cane, sorghum or agave. Historically, the fibrous matter that becomes bagasse was considered an unusable product and disposed of by either burning or being left in a pile to eventually rot. Thankfully the days of wasting this revolutionary resource are a thing of the past and attitudes have changed and what is now known as bagasse is being seen as the valuable renewable resource that it is.



Did you know?

The manufacturing of catering disposables isn't the only thing that bagasse excels at. Its most abundant use is in power production. When burned, bagasse produces sufficient heat to generate enough energy to power the sugar mills that are creating even more of this wonder product. Bagasse is such a successful fuel resource it's becoming an increasingly more common way of generating heat and electrical energy that is then sold back into the power grid, all from something that was historically seen as a waste material.



Bagasse is a wonder product when it comes to being applied to a catering disposables situation. Naturally grease and cut resistant, bagasse can also safely be microwaved, frozen and even withstand temperatures of up to 200°F (around 93°C).

Due to being totally plant-based, bagasse is also widely welcomed in commercial composting facilities, acting as an important way to introduce carbon into the composting process. Most bagasse can also be safely composted at home too, providing end users chop or shred the product to suitable sizes and use correct composting measures, as outlined previously.



Bagasse acts as a fantastic polystyrene replacement for takeaways and fast food as it's breathable, allowing condensation out but retaining heat keeping food nice and hot.



Bamboo

Bamboo is naturally strong and water-resistant, which makes plates, bowls and cutlery robust without damaging or splintering.

The manufacturing process of bamboo products starts with the collection of the sheaths that grow in layers on a bamboo stem. Once a new layer is grown, the outer sheath falls to the ground, similarly to how palm leaves are collected for production. Once the sheets have been collected they are pressed and bonded into the required shape, without using chemicals or toxins



Did you know?

Bamboo is one of the fastest growing plants on earth. In perfect conditions, bamboo can grow 91cm in a 24 hour period, this equates to almost 4cm an hour. Because of this astronomical growth a full bamboo forest can establish itself in just a few years.





Palm Leaf

Palm leaf is made from the natural fallen leaf of the palm tree, which shed their leaves up to 7 times a year. Once collected these are cleaned and then heat pressed into relevant shapes and sizes. Palm products don't receive any lamination or additional coatings hence they are fully compostable.



Wood

A common wood used in the production of disposable products is birch. Wood is most commonly seen in the production of cutlery, however other wooden food serving solutions are becoming readily available.

Wood by nature is 100% compostable, meaning separation and cleaning isn't needed when disposing of. Most effectively disposed of in an industrial composting setting, however will also break down in a home compost heap.

Recycled Paper/Card

Products made from recycled card and paper result in less waste going to landfill, reducing the amount of greenhouse gasses being released into the atmosphere.

Polypropylene (PP)

Polypropylene is one of the most common "conventional" plastics. Polypropylene is popular due to its versatility in application. It's tough yet flexible, and classed as semi-rigid. Polypropylene is extremely resistant to heat, chemicals and degeneration over time. Polypropylene is fully recyclable when cleaned and sorted.

Polycarbonate (PC)

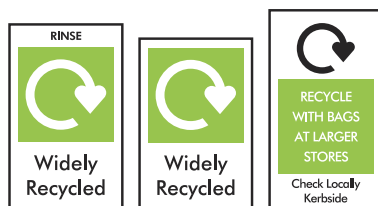
Polycarbonate is categorised under the plastic identification number "7" (see page 49), which denotes "other plastics, including acrylic, polycarbonate, polylactic fibers, nylons, fibreglass".

Polycarbonate is versatile and popular, available in various grades such as flame retardant, reinforced, shatter/crack resistant etc. Polycarbonate is strong and considered as an unbreakable option, ideal for use for outside dining and drinking. Polycarbonate's raw material is oil and as such is not as environmentally conscious as other options.



Recycling Symbols, Explained

When looking at any packaging and disposables you may have been presented with a myriad of different symbols. The guide below will help you understand the symbols and icons that you may encounter.



Widely Recycled

Denotes material that is collected by at least 75% of the local authorities across the United Kingdom. These symbols are included with additional instructions to comply with recycling processes.



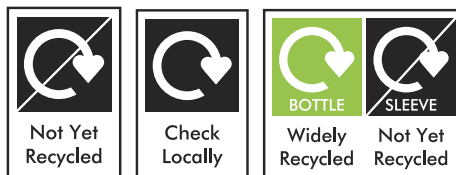
EU Ecolabel

Established in 1992, the EU Ecolabel is recognised across the world as a stamp of environmental excellence, and awarded to products and services meeting or exceeding a high environmental stand throughout their life-cycle: from raw material extraction to production, distribution, and end of life disposal.



FSC Certified

FSC stands for the Forest Stewardship Council, the tick tree logo identifies packaging/products which contain wood from an environmentally conscious and managed forest. The logo is a trademark and can only be used once the product or item has been certified and approved by the FSC.



Limited and Non-Recycled

Identifies materials that are either collected by less than 20% of local authorities, or not collected at all. The black version of the symbol may also be seen alongside a green version when a product has more than one type of material and requires additional sorting.



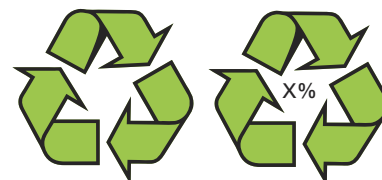
OK Compost (Industrial)

This symbol certifies that packaging is compostable in industrial composting units (including any inks, additives etc that may have been applied to the material) is in accordance with the European EN 13432 and the American ASTM D6400 standards for compatible materials.



The Green Dot

"The Green Dot" is a trademark logo used by PRO Europe (Packaging Recovery Organisation Europe) to signify that the producer has made a (most commonly financial) contribution towards the recycling of packaging, however it does not mean that the product is recyclable or has been made from a recycled material.



Mobius Loop

One of the most recognisable recycling symbols, showing that the material is totally recyclable.



Compostable (Seedling)

The compostable seedling is a registered trademark of European Bioplastics. Use of the seedling logo on any material or product would require suitable permissions and licencing from European Bioplastics. This symbol denotes that it's certified industrially compostable according to the European standard EN 13432.



